



PROJECT SOLUTION

HOTEL
FURNITURE



Wd Corp Ofet Mobilyalar & B.
Hotel Furniture
@ walandesign



Luxury Home Furniture
Lüks Ev Mobilyaları
@ walandesign



Hotel Furniture
Hotel Mobilyaları
@ #walandesign



Watan Education Furniture
Watan Eğitim Mobilyaları
@ #walandesign



Watan Office Furniture
Watan Ofis Mobilyaları
@ #walandesign



Watan Door
Watan Kapılar
@ #walandesign

WD WATAN
DESIGN
GROUP PROJECT SOLUTIONS
WD GRUPOTEL MOBİLYALARI A.Ş.

HOTEL
FURNITURE

Welcome to Millennium Fit-Out Company: Your Gateway to WD Hotel Furniture Excellence!

We are thrilled to announce a monumental milestone in our journey. Millennium Fit-Out Company has proudly become the official agent for one of the largest fitting-out companies globally, WD Hotel Furniture. This partnership marks a new era of unparalleled quality and expertise in the world of fit-out solutions.

At Millennium, we have always strived for excellence in crafting bespoke environments that surpass expectations. Now, with WD Hotel Furniture's renowned legacy and expertise, we are poised to set new standards in the industry.

Explore our website to discover the extraordinary range of products and services that this collaboration brings to your projects. From innovative designs to impeccable execution, we are here to transform your spaces into exceptional experiences.

Thank you for joining us on this exciting journey. Together, we are redefining fit-out excellence on a global scale.

Warm regards,

Amr Z Ibrahim
CEO
Millennium Fit-Out





WD GRUP OTEL MOBİLYALARI TİC ve SAN A.Ş.
Yenidoğan OSB Yıldırım Beyazıt Caddesi No:13 Gürsu / BURSA - TÜRKİYE
+90 444 1 632 info@watan.design.com
www.watandesign.com



Exclusive AGENCY AGREEMENT

This Agency Agreement is made and entered into as of [25/10/2023], by and between **[WD Group]**, (the "Principal") a [S.A.T] organized under the laws of [Turkey/Bursa], with its principal place of business at [Byazıt Caddesi No: 13 cursu/Bursa] (the "Principal"), and **[Millennium Construction]**, a [L.L.C] organized under the laws of [Egypt], with its principal place of business at [290 North 80 With Mohamed Najeab Axis, Cairo, Egypt] (the "Agent").

BACKGROUND:

- A. **WD Group** is engaged in the business of [Hotel Furniture and Wood works].
- B. **Millennium Construction** is experienced in [Fit-Out Business].
- C. **WD Group** desires to appoint **Millennium Construction** as its exclusive representative for selling, marketing, and distributing its products and/or services in Egypt.

NOW, THEREFORE, the parties agree as follows:

1. APPOINTMENT

- 1.1 Exclusive Agency Appointment: **WD Group** hereby appoints **Millennium Construction** as its exclusive agent for Egypt, and **Millennium Construction** hereby accepts such appointment. **Millennium Construction** shall have the exclusive right to promote, sell, market, and distribute **WD Group** products and/or services in Egypt.
- 1.2 Exclusivity: **Millennium Construction** agrees not to engage in any activities that compete with **WD Group** business or interfere with **Millennium Construction's** obligations under this Agreement without the prior written consent of the Principal.

2. TERM

- 2.1 Initial Term: This Agreement shall commence on [25/10/2023] and shall continue for an initial term of [10years] unless terminated earlier in accordance with the provisions hereof.
- 2.2 Renewal Term: Upon the expiration of the initial term, this Agreement shall automatically renew for successive renewal terms of [10years] each unless either party provides written notice of its intention not to renew at least [180] days prior to the end of the then-current term.

3. COMPENSATION:

- 3.1 Commission: **WD Group** shall compensate **Millennium Construction** for its services rendered under this Agreement by paying a commission on each sale made by the Agent, as set forth in Schedule A attached hereto.
- 3.2 Payment: **WD Group** shall pay the Agent's commission within [30] days of the receipt of payment from the customer or as otherwise agreed in writing between the parties.

4. RESPONSIBILITIES:

- 4.1 Agent's Responsibilities: **Millennium Construction** shall use its best efforts to promote, market, and sell the Principal's products and/or services within the Territory. The Agent shall maintain an adequate inventory of the Principal's products, provide customer support, and maintain accurate records of sales and transactions.
- 4.2 Principal's Responsibilities: **WD Group** shall provide the Agent with necessary product information, training, marketing materials, and technical support to enable the Agent to effectively carry out its obligations under this

5. Agreement:

5. CONFIDENTIALITY:

- 5.1 Confidential Information: During the term of this Agreement, the Agent may have access to certain confidential and proprietary information of the Principal, including but not limited to customer lists, pricing information, and trade secrets (the "Confidential Information").
- 5.2 Non-Disclosure: The Agent agrees to keep the Confidential Information strictly confidential and not to disclose, directly or indirectly, any such Confidential Information to any third party without the prior written consent of the Principal.



WD GRUP DTEL MOBİLYALARI TIC ve SAN A.Ş
Yenidoğan OSB Yıldırım Beyazıt Caddesi No:13 Gürsu / BURSA - TÜRKİYE
+90 444 1 632 info@watandesign.com
www.watandesign.com



6. TERMINATION:

6.1 Termination for Convenience: Either party may terminate this Agreement without cause at any time by giving [180] days' written notice to the other party.

7. GOVERNING LAW AND JURISDICTION:

This Agreement shall be governed by and construed in accordance with the laws of [Turkey/Bursa]. Any dispute arising under or in connection with this Agreement shall be subject to the exclusive jurisdiction of the courts located in [Turkey Jurisdiction].

8. ENTIRE AGREEMENT:

This Agreement sets forth the entire understanding and agreement between the parties with respect to the subject matter hereof and supersedes all prior agreements, understandings, and representations, whether oral or written. IN WITNESS WHEREOF, the parties hereto have executed this Agency Agreement as of the date first above written.

WD Group

By: _____

Name

Title:



Millennium Construction

By: CEO

Name:

Title:

Acem ZIbrahim
[Signature]



CONTENTS

İÇİNDEKİLER

About Us		Hakkımızda	10
Our Values		Değerlerimiz	11
Who We Are ?		Biz Kimiz?	12
Our Group		Grubumuz	13
Management		Yönetim	14
Our Team		Ekibimiz	15
Our Departments		Departmanlarımız	16
Production		Üretim	17
Our Factory		Fabrikamız	20
Production		Üretim Hattı	25
Research & Development		AR-GE	40
Process		Süreç	
Why Us		Neden Biz?	
Services We Provide		Sunduğumuz Hizmetler	
References		Referanslarımız	200
Certificates		Sertifikalarımız	202

ABOUT US

HAKKIMIZDA

WD GROUP was established in early 2012 and operates in highly equipped and integrated production facilities thanks to the cutting edge production know-hows that WD GROUP approach using state of art machines and professional R&D, architectures and interior designs team.

WD GROUP operate a wide range of production lines and facilities such as panelling furniture, solid wood furniture, doors, upholstery furniture, metal works, painting and coating works.

Our professional selected man power with adopted production system in additions to other production facilities which include 15.000 SQM production area and 5.000 SQM warehousing area and our project management team, WD GROUP has a comparative advantage enable us to perform all type of FF&E projects efficiently and competitive costs.

As WD GROUP strategy, we designed horizontal and vertical directions to expand our production facilities lines by developing machinery equipment contiguously and adding new and high technology production lines.

On the other hand expanding the production scales to cover all FF&E projects such as hotel, residential, hospitals, shopping malls, educational and school projects and recently airports and all fit-out projects.

Being a Contracting Solution Partner, in all projects that we are working on and projects that we aim to win, as we believe that just high quality products and competitive cost are not only what customer looking for, we go beyond on customer exceptions and providing smart and integrated solutions for all projects to ensure that project will go on as planned and as client aim to receive in the end.

WD GROUP, 2012'nin başlarında, yüksek donanımlı ve entegre üretim tesisiyle son teknoloji ürünü makineler ile, profesyonel AR-GE ve mimarî kadrosu ile mobilya ve inşaat sektöründe faaliyet göstermektedir.

WD GROUP, lambri ahşap dekorasyon, masif ahşap üretimleri, döşeme ve metal işleri ile kaplamalı ya da hazır mobilya alanlarının tümünde faaliyet göstermektedir.

15.000 m²'lik üretim alanı, 5.000 m²'lik depolama alanı ve profesyonel iş gücümüz ile WD GROUP, her türlü proje (otel, konut, hastane, alışveriş merkezi ile eğitim ve okul projeleri) imalatı gerçekleştirmemizi sağlar.

WD GROUP olarak, makine ekipmanını ve fabrikamızı yatay ve dikey genişlemeye uygun olarak tasarladık ki, siz müşterilerimize en uygun sürede ve en yüksek teknoloji ile cevap verebilelim. Bu şekilde büyük ölçekli okul, otel, konut, hastane ya da alışveriş merkezi projelerinde yer alabiliyoruz.

Tüm anlamda çözüm ortağı olabilmek, üzerinde çalıştığımız tüm projelerde ve kazanmayı hedeflediğimiz projelerde ana yaklaşımımızdır. Çünkü sadece yüksek kalite ya da uygun fiyat müşterilerimizin aradığı şey olmadığına inanıyoruz. Müşteri beklentilerinin de ötesine geçerek akıllı, pratik ve entegre çözümlerimizle siz müşterilerimizin en iyi kaliteye sahip olmasını hedefliyoruz.

VISION

VİZYON

Our vision is taking the leadership the FF&E and fit-out projects sector in general in addition to providing our know-how in furniture design in particular and to participate in the world progress in the furniture industry as an active player in the furniture sector.

Yızyonumuz, özellikle mobilya sektöründe yıllardır yakaladığımız bilgi birikimimizi kullanıp, sektörde Dünya'daki gelişmelere uygun olarak yer almanın yanı sıra, FF&E ve fit-out projelerinde sektör liderliğini hedefliyoruz.

MISSION

MİSYON

Our Mission is to be a solution partner for our clients, world interior designers and furniture industry sector and to provide innovative and sustainable technical solutions which lead to increasing in productivity, reducing the cost, gaining more customers loyalty.

Misyonumuz; müşterilerimizin, iç mimarları ve mobilya endüstrisiyle alakalı isteklerine cevap verip çözüm ortağı olmak ve verimlilikte artışa, maliyeti düşürmeye, daha fazla müşteri sadakati kazanmaya yol açan yenilikçi ve sürdürülebilir teknik çözümler sunmaktır.



OUR VALUES

DEĞERLERİMİZ



OUR TEAM

Ekibimiz

WD GROUP team contains of total around 250 employee configure of well-educated architectures and engineers , In addition to qualified white collar , and high skilled blue collar team.

WD GROUP ekibi toplamda yaklaşık 250 çalışandan oluşmaktadır.

30

Architect and Engineers 70%
Architect and 30% Engineers
Mimar ve Mühendis Kadrosu

50

Person White Collar
Beyaz Vaka

110

Person Blue Collar
Mavi Vaka

60

Assembling Team
Montaj Ekibi





WHO WE ARE?

BİZ KİMİZ?

As WD GROUP, we take an active role in the furniture sector in the world market with our high-tech production line, professional R&D team, expert architecture and design staff. We are trying to follow customer needs and we act and serve with values such as innovative solutions, delivery, material quality and reliability today.

WD GROUP olarak, bünyemizdeki son teknoloji üretim parkuru, profesyonel ekibi, uzman mimari ve tasarım kadromuzla, dünya pazarında mobilya sektöründe aktif rol almaktayız. Müşteri odaklı yaklaşımımız sayesinde, yenilikçi çözümler, zamanında teslimat, malzeme kalitesi, güvenilirlik gibi değerlerimizle hareket ediyor ve hizmet veriyoruz.

OUR GROUP

GRUBUMUZ

WD GROUP is a group of companies which own and manage WATAN DESIGN brands which are WD GROUP, WATAN DESIGN markalarına sahip olan ve bunları yöneten bir şirketler grubudur.

WD Hotel Furniture and Contracting
WATAN Home Furniture
WATAN Office Furniture
WATAN Educational Furniture
WATAN Door

WD Otel Mobilyaları ve Proje Çözümleri
WATAN Ev Mobilyaları
WATAN Ofis Mobilyaları
WATAN Eğitim Mobilyaları
WATAN Kapı

MANAGEMENT

YÖNETİM



YUNUS GÜNER DÜZEL

Chairman of Board
Yönetim Kurulu Başkanı

We are committed to providing reliable, amicable, and professional service to our valuable clients, and to being supportive to local businesses and social activities, being friendly to the environment as well as being proactive in furniture industry within which we operate.

Değerli müşterilerimize güvenilir, dostane ve profesyonel hizmet sunmayı, yerel işletmelere ve sosyal aktivitelere destek olmayı, çevreye dost olmayı ve faaliyet gösterdiğimiz mobilya sektöründe proaktif olmayı taahhüt ediyoruz.



AHMED ASHRAF

Managing Director
Genel Müdür

WD GROUP established to lead and to provide solutions of contracting project. We invest in our team who enable us to be the pioneer of furniture industry not only in Turkey but in all over the world.

WD GROUP olarak tüm taahhüt projelere liderlik etmek ve çözüm üretmek amacıyla kurulmuş olup sadece Türkiye'de değil tüm dünyada mobilya sektörünün öncüsü olmamızı sağlayan ekibimize yatırım yapıyoruz.

OUR DEPARTMENTS

DEPARTMANLARIMIZ



DESIGN STUDIO - ARCHITECTURAL OFFICE / TASARIM MERKEZİ - MİMARİ OFİS

It plays an active role in the analysis of projects such as evaluation, management and production parts of the project.
Projenin değerlendirilmesi, çözümlenmesi, yönetilmesi gibi konularda aktif rol oynar.



PLANNING / PLANLAMA

It provides control of products and they are making coordination with departments such as architectural team -R&D- purchasing - production etc.

Projenin sürecinin tüm detaylarında mimari ekip, AR-GE, satın alma, üretim gibi departmanlarla koordineli bir şekilde hareket ederek, ürünlerin kontrolünü sağlar.



RESEARCH & DEVELOPMENT DEPARTMENT / ARGE MERKEZİ

It provides the production drawings and detail solutions of the project managed by the architectural team. It works in coordination with the architect.

Mimari ekibin yönettiği projenin üretim çizimlerinin yapılmasını, detay çözümlerinin hazırlanmasını sağlar. Mimari ile koordineli çalışır.



MARKETING / PAZARLAMA

Collaborates with sales channels and technical units to develop project ideas.
Satış kanalları ve teknik birimler ile işbirliği yaparak proje fikirleri geliştirir.



LOGISTICS / LOJİSTİK

It performs the delivery of the products in domestic or international types. After the check, this department is responsible for delivery the containers to the customer in a fast, practical and safe manner.

Yurt içi ve yurt dışı projelerinde ürünlerin teslimatını prosedürlere uygun ve doğru bir şekilde gerçekleştirir. Kontrol yapıldıktan sonra, müşteriye hızlı, pratik ve güvenli bir şekilde teslim edilmesini sağlar.



PURCHASING DEPARTMENT / SATIN ALMA

They are responsible of prepare all supplied materials after the preparation quantification and quantity calculations. Proje ile ilgili tüm ürünlerin miktar, metraj hesaplamalarının yapıldıktan sonra temin edilmesini sağlar.



FINANCE / FİNANS

Determines financial targets and develops financial model for targets.
Mali hedeflerini belirler ve hedeflere yönelik finansal model geliştirir.



HUMAN RESOURCES / İH

Creating the most effective working environment for working individuals and trying to meet their needs at the maximum level. Çalışan bireyler için en etkili çalışma ortamını oluşturarak ve onların ihtiyaçlarını maksimum düzeyde karşılamaya çalışır.





OUR FACTORY

FABRİKAMIZ

WD GROUP has 15.000 SQM in land production areas, 5.000 SQM warehousing areas and up to 20.000 SQM of other production subsidiaries area, With integrated production line and machine facilities contains of cutting and panelling machines,CNC machines,pressing, edge panting,painting and sanding machines,door frames shaping machine,solid wood cutting and shaping machines , metal welding and polishing machines , in additions all high tech upholstery machines all of these enable us to reach to perfect capacity by the support of optimization production systems and know-how we reach to capacity of annual production of:

2 400 Bedroom Sets, 12 000 Doors ,10 000 PCS of Sofas and Chairs , more than 30 000 Of metal based furniture .

WD GROUP olarak, 15 000 m² kapalı üretim alanına, 5 000 m² depolama alanına ve 20 000 m² açık üretim alanına sahibiz. Tüm bu entegre üretim hattında, pres, bantlama, ebatlama, CNC Kesim, boya ve zımpara alanlarının bulunmasının yanı sıra her türlü hazır ve maslf materyal işleme için yeterli sayıda ekipman ve iş gücüne sahibiz. Metal bölümünde ise her türlü tasarıma dayalı alüminyum ve metal kesme, kaynak, bükme ve polsaj işlemlerini gerçekleştirebilecek donanıma sahibiz. Döşeme hattında ise son model ekipmanlarımız ile siz müşterilerimize yeterli kapasite ve kalitede ürün hazırlama konusunda iddialıyız.

2.400 yatak odası takımı
12.000 kapı

10.000 kanepe ve sandalye grupları
30.000'den fazla metal tabanlı mobilya





PRODUCTION

ÜRETİM HATTI

WD GROUP, has integrated production lines which help to produce in land all kind of furniture base projects and contracts.

WD GROUP, her türlü mobilya tabanlı proje ve sözleşmede, üretim yapmaya uygun, son teknoloji entegre üretim hatlarına sahiptir.





01

Panel Production line

Panel Üretim Hattı



Panel Production Line

Panel Üretim Hattı

It operates in its highly equipped integrated production facility, with its state-of-the-art machinery and professional architectural staff. It continues to work in parallel with the constantly evolving concept.

Yüksek donanımlı entegre üretim tesisinde, son teknolojik makine parkuru ve profesyonel mimari kadrosu ile faaliyet göstermektedir. Sürekli gelişen konseptte paralel olarak çalışmalarını sürdürmektedir.





02

Solid Wood Production Line

Iskelet Üretim Hattı



Solid Wood Production line

Iskelet Üretim Hattı

The most distinctive feature of the skeleton part is its meticulousness and expert handwork. This feature makes it attractive. It is its skeleton and strength that makes the product useful for life. Transmitted from generation to generation These components are vital in determining the life of the furniture.

Iskelet bölümün en belirgin özelliği titizliği ve uzman el işçiliğidir. Bu özellik onu çekici kılar. Yaşam boyu ürünü kullanılır yapan şey iskeleti ve sağlamlığıdır. Nesilden nesile aktarılmasını sağlayacak bu bileşenler, mobilyanın ömrünü belirlemede hayati önem taşır.





Upholstery Production line

Döşeme Üretim Hattı



Upholstery Production line

Döşeme Üretim Hattı

Our company uses first class quality products in seat manufacturing. With years of knowledge, we produce quality and functional sofa sets that our valued customers will use in their living spaces for many years.

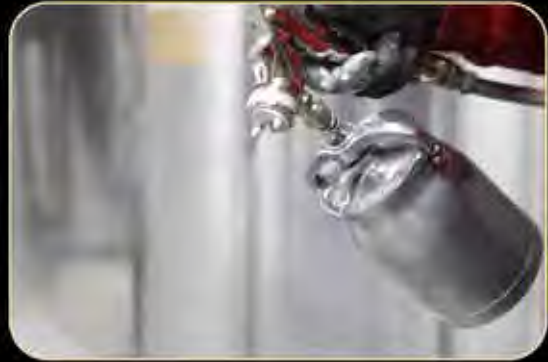
Firmamız koltuk imalatında birinci sınıf kaliteli ürünler kullanmaktadır. Yılların verdiği bilgi birikim ile siz değerli müşterilerimizin yaşam alanlarında uzun yıllar kullanacağı kaliteli ve işlevsel koltuk takımları üretmekteyiz.





04

Painting Production Line Boyahane Üretim Hattı



Painting Production line

Boyahane Üretim Hattı

What will best complement the wood is the highest quality paint and varnish process. Polishing is the final stage of furniture making and before the product leaves the factory. is the last process. This polishing applied by skilled professionals with superior techniques operations are carried out in a closed environment in order to maintain cleanliness and care.

Ahşabı en iyi şekilde tamamlayacak şey de en kaliteli boya ve cila işlemidir. Cilalama, mobilya yapımının son aşamasıdır ve ürün fabrikadan çıkarılmadan önce gördüğü son işlemdir. Yetenekli profesyoneller tarafından üstün tekniklerle uygulanan bu cilalama işlemleri temizliği ve özeni sürdürmek adına kapalı ortamda gerçekleştirilir





Metal Production Line
Metal Üretim Hattı



Metal Production Line

Metal Üretim Hattı

Our team, which has become professional in its field, uses any product you dream of with the right ergonomics. It can produce within the conditions. Apart from the standard collection, the designs of architectural teams. Every project they realize is implemented by our team. Products worthy of art. Thank you for being with us for choosing and for trusting us.

Konusunda profesyonelleşmiş olan ekibimiz, hayal ettiğiniz her türlü ürünü doğru ergonomi koşulları içinde üretebilmektedir. Standart koleksiyonun dışında, mimari ekiplerin tasarımlarını gerçekleştirdikleri her proje, ekibimiz tarafından hayata geçirilmektedir. Sanata yakışır ürünler tercih ettiğiniz için yanımızda olduğunuz ve bize güvendiğiniz için sonsuz teşekkürler.





Door - Wood Production Line

Kapı - Ahşap Üretim Hattı



Door - Wood Production line

Kapı - Ahşap Üretim Hattı

It operates in its highly equipped integrated production facility, with its state-of-the-art machinery and professional architectural staff. It continues to work in parallel with the constantly evolving concept.

Yüksek donanımlı entegre üretim tesisinde, son teknolojik makine parkuru ve profesyonel mimari kadrosu ile faaliyet göstermektedir. Sürekli gelişen konseptte paralel olarak çalışmalarını sürdürmektedir.



OUR REFERENCES

REFERANSLARIMIZ





PROJECT INNER PAGE

PROJE İÇ SAYFASI

SEQUENCE NO SIRA NO	COUNTRY ÜLKE	PROJECT NAME PROJE ADI	PAGE NO SAYFA NO
1	AL - AHSA KSA	INTERCONTENTAL HOTEL	00
2	RİYADH	SOFITEL HOTEL	00
3	DAMMAM	RADISSON BLU	00
4	BELGRADE	HVATT REGENCY	00
5	KUWAIT	LEVEL HOTEL	00
6	RİYADH	BRAIRA HOTEL	00
7	JEDDAH	RAMADA HOTEL	00
8	QATAR	DOHA - QATAR	00
9	JEDDAH	HOLIDAY INN	00
10	RİYADH	HOLIDAY INN	00
11		GOLDER INN	00
12		A TOWER	00
13	RİYADH	ABER MONISYA	00
14	MAKKAH	CAPITAL HOTEL	00
15		DOUBLE TREE	00
16		MANISA PRIME	00
17		MÖVENPICK HOTEL	00
18		SOMALIA	00
19		NIGERIA	00
20		EGYPT	00

Project Solution



الأحساء إنتركونتيننتال



**INTERCONTINENTAL
HOTEL**

Al Ahsa

AL-AHSA INTERCONTINENTAL

أهسا إنتركونتيننتال
AL-AHSA INTERCONTINENTAL











**SOFITEL
HOTEL**

RIYADH













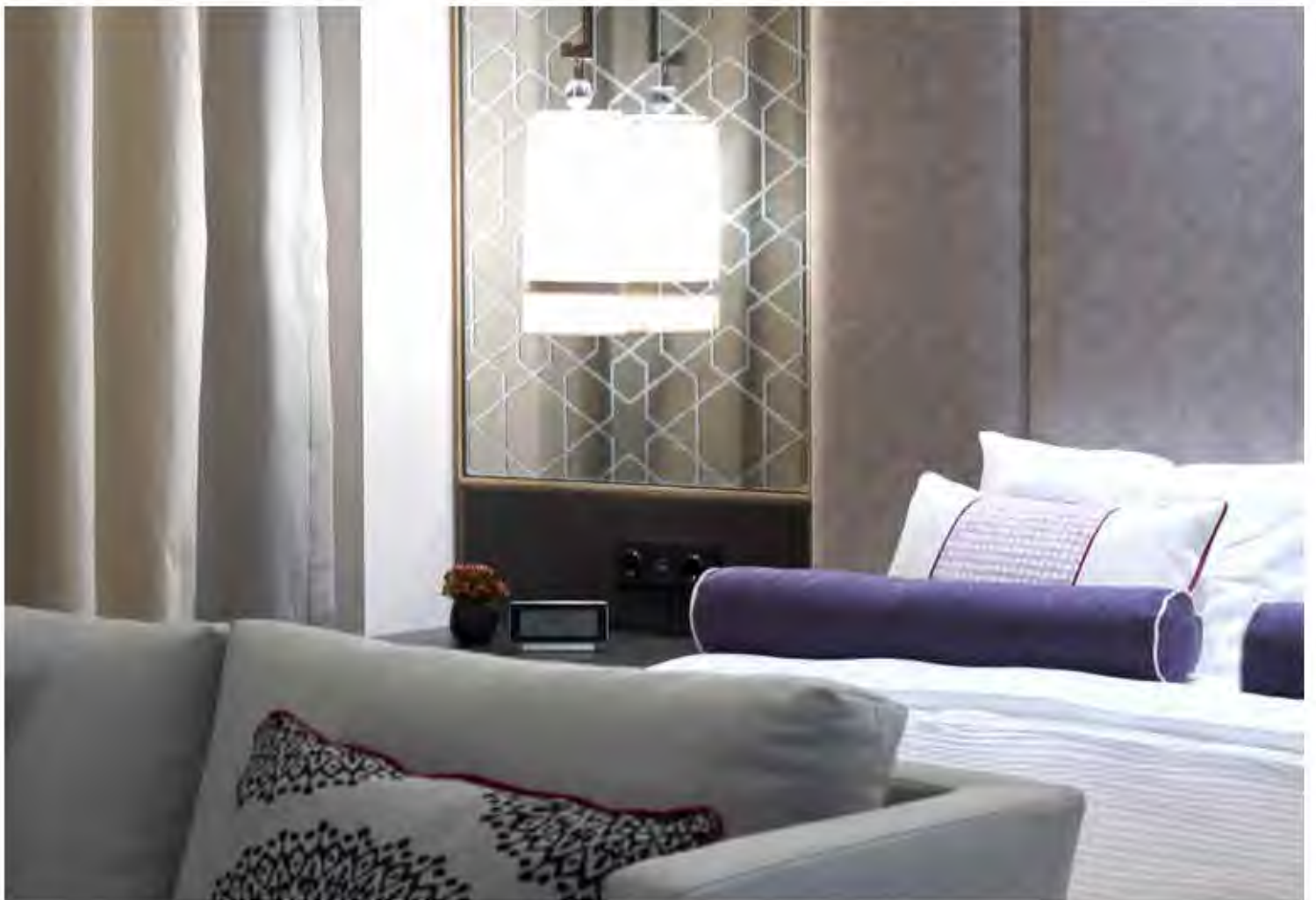














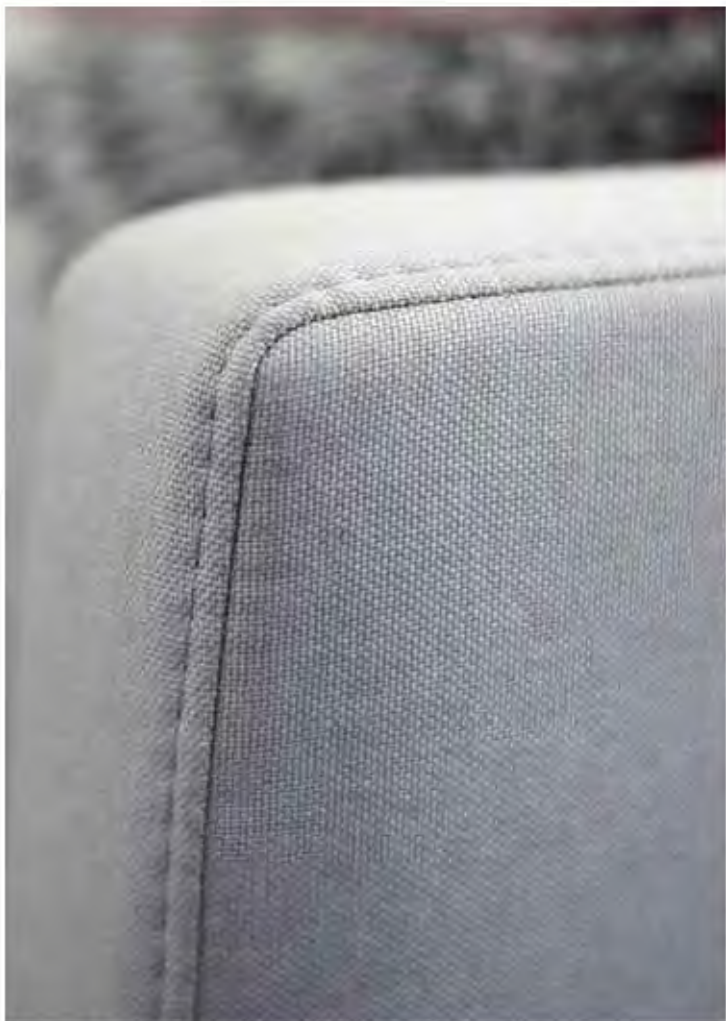
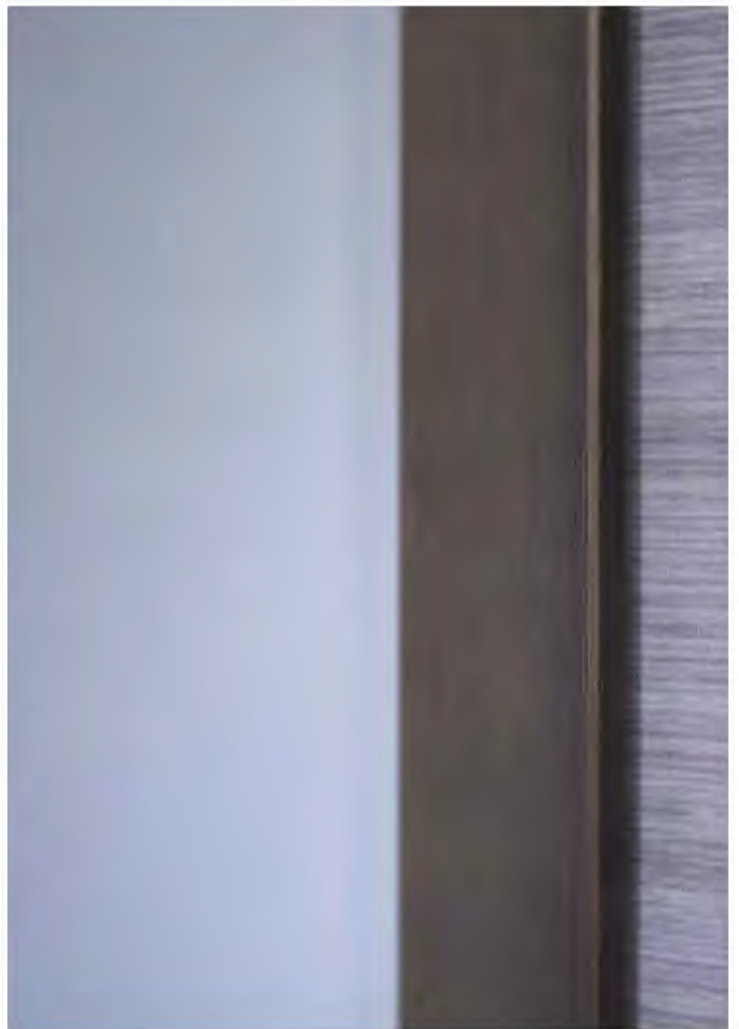


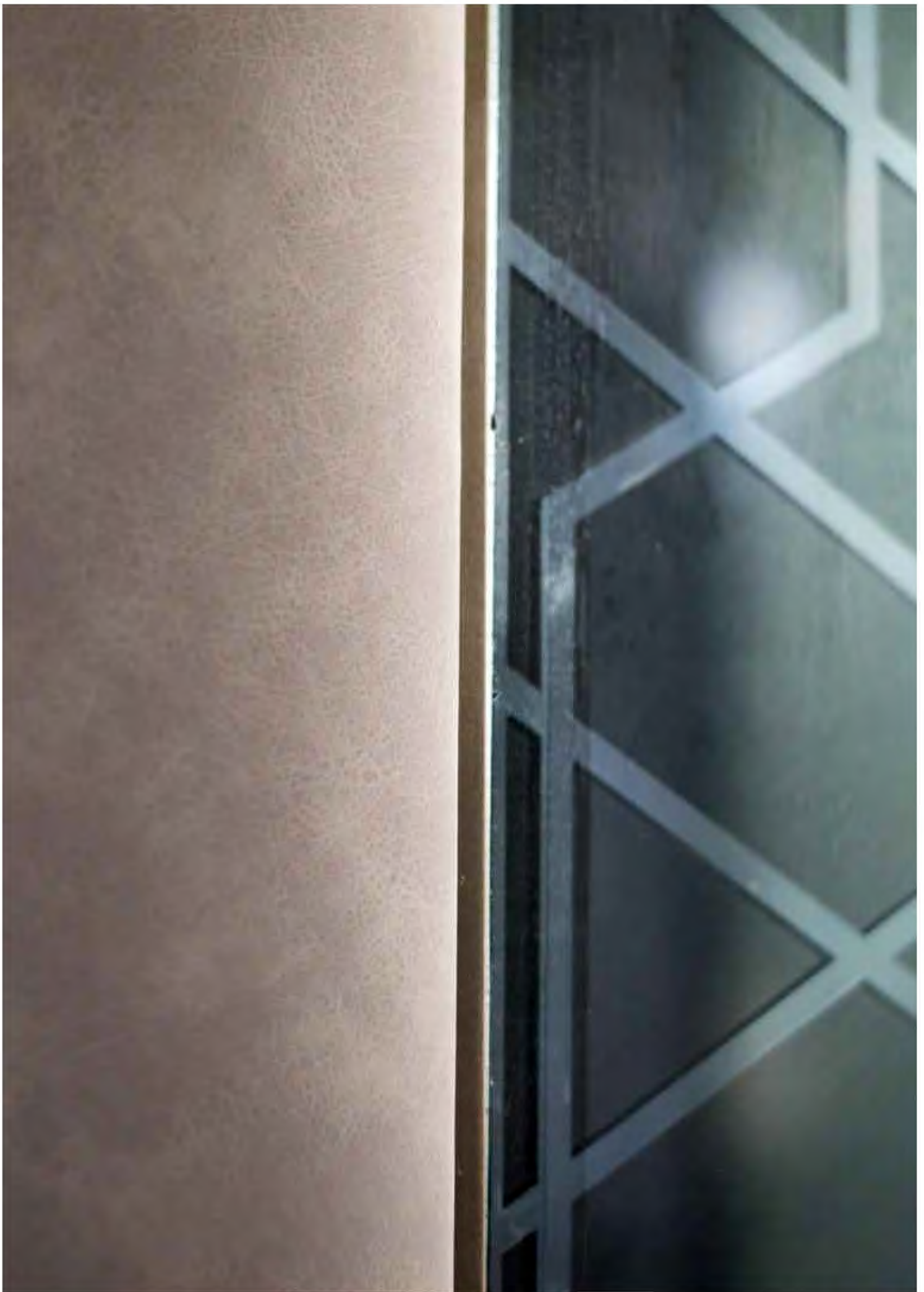


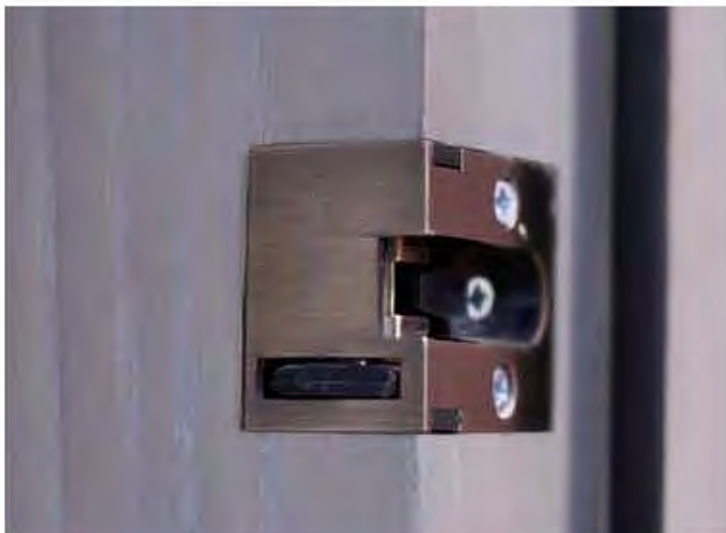
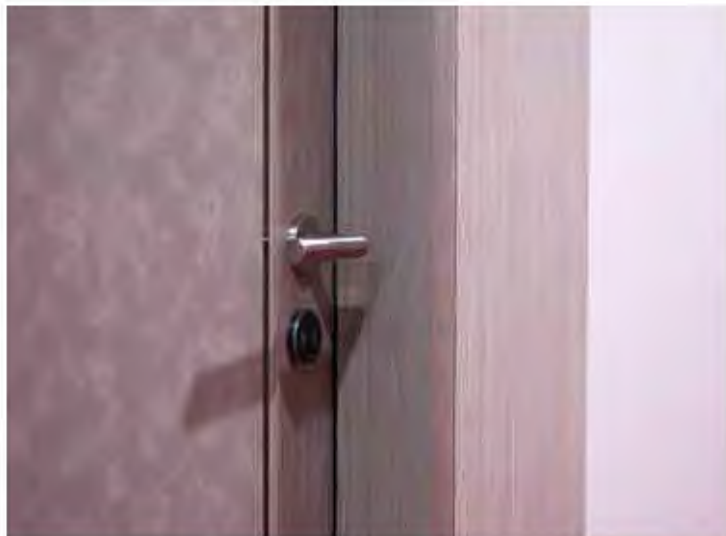






















**RADISSON BLU
HOTEL**

DAMMAN





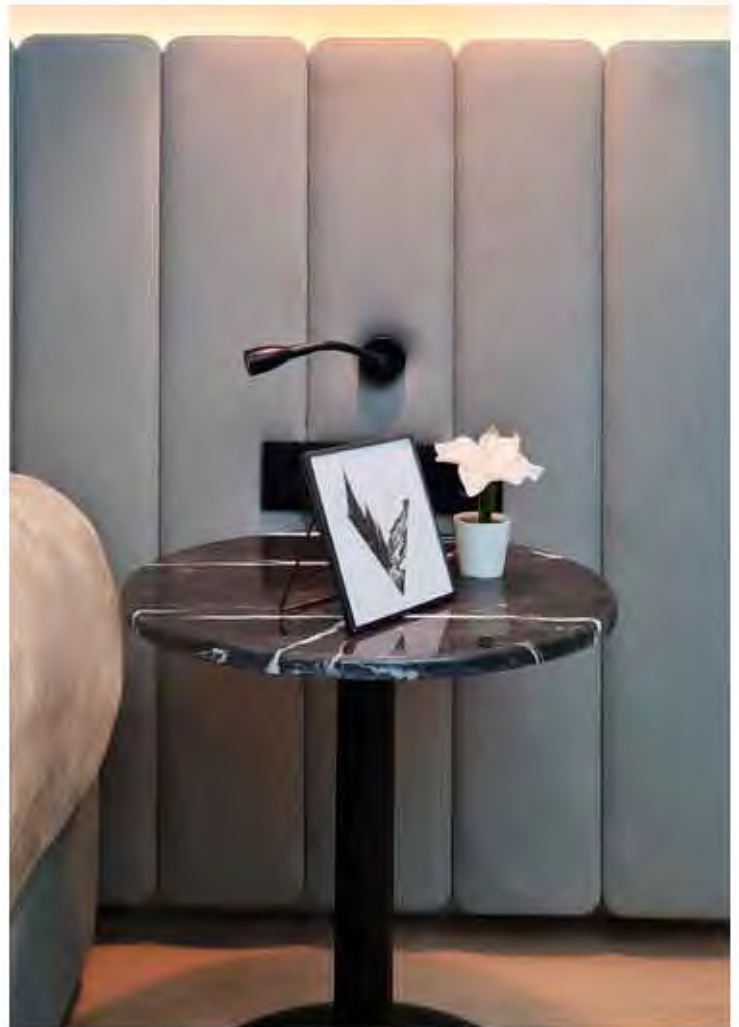








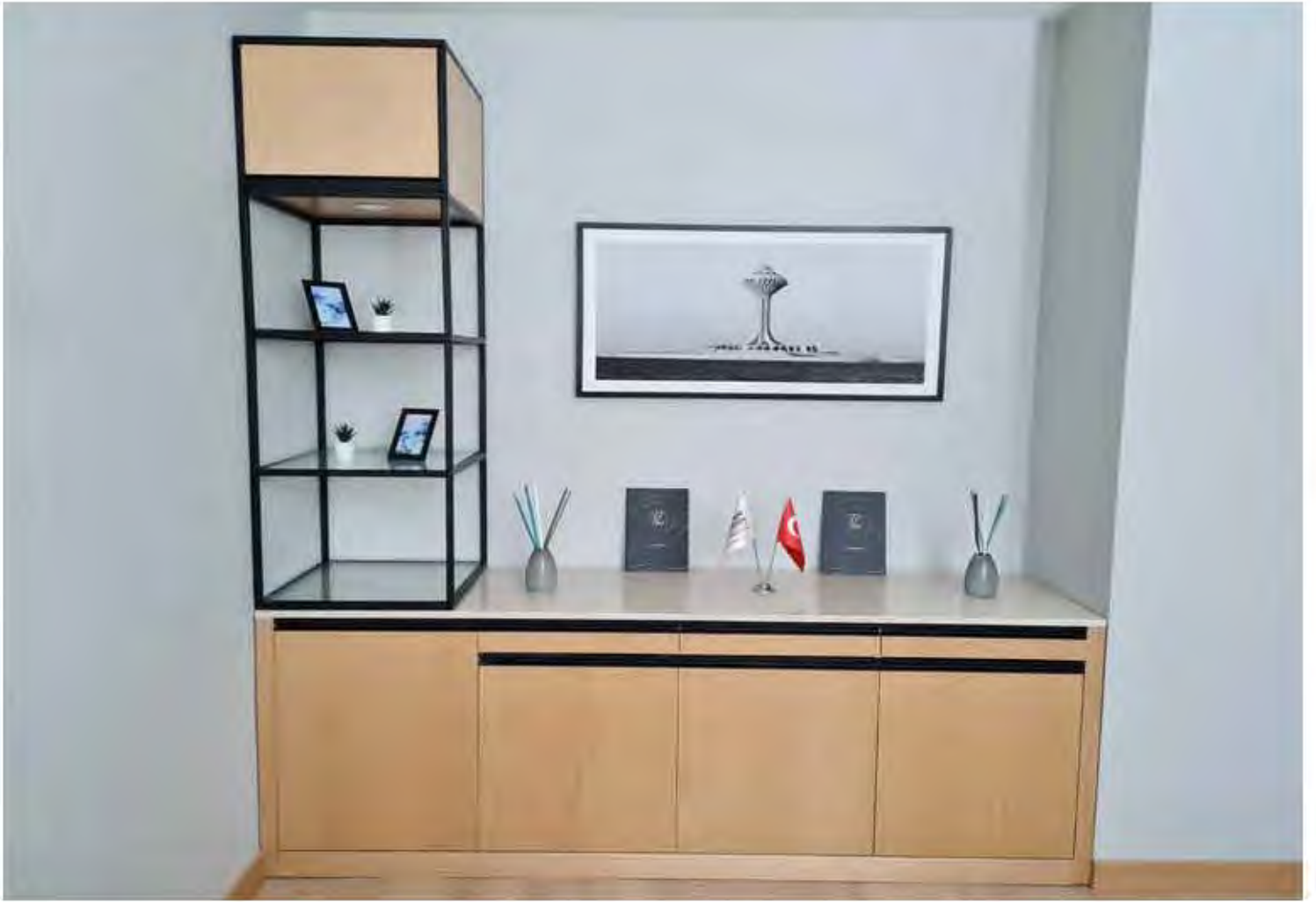
















WD GROUP

**HYATT RESIDENCE
TEA HOUSE
HOTEL**

BELGRADE



















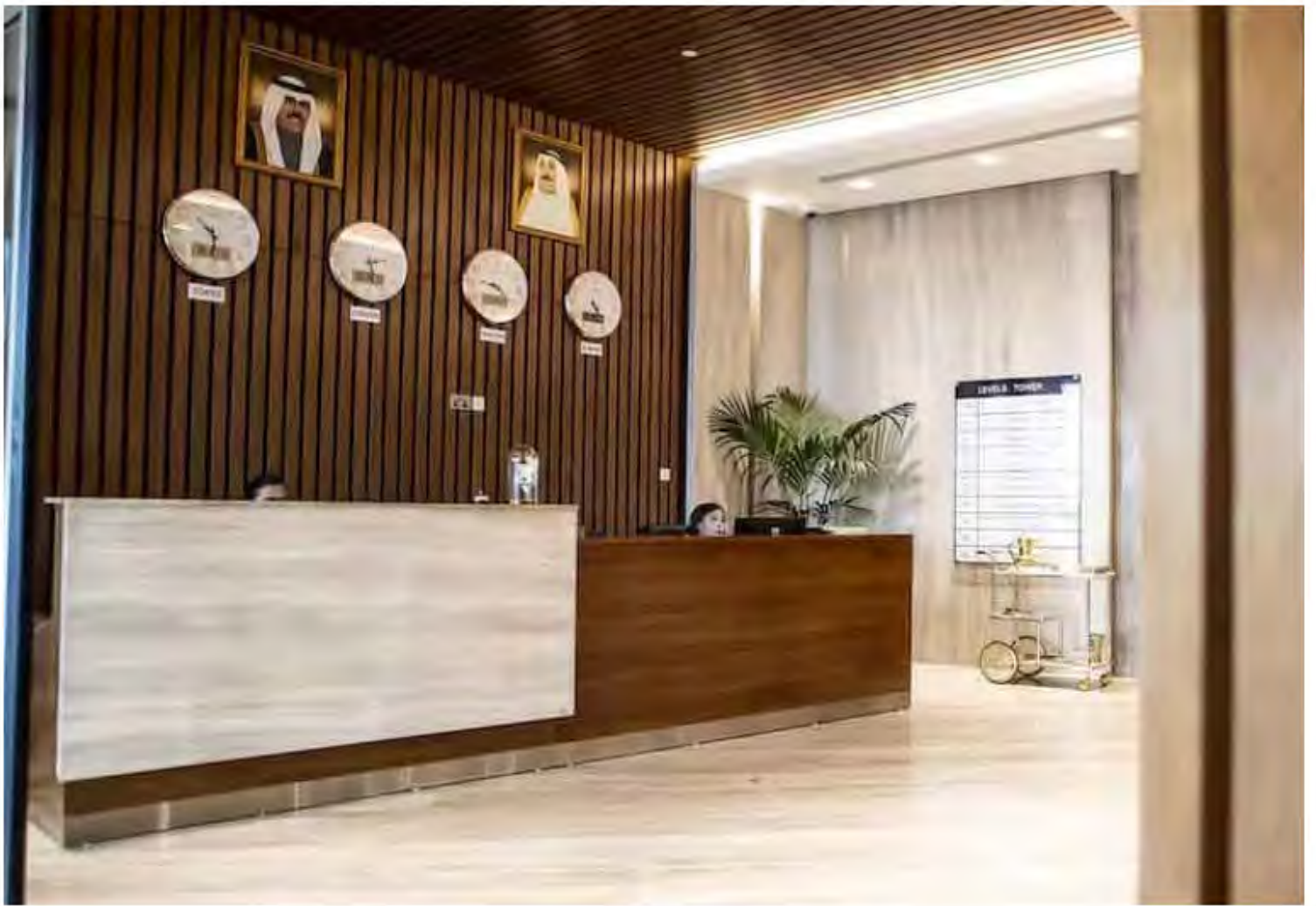
LEVELLS



**LEVELS RESIDENCE
HOTEL**

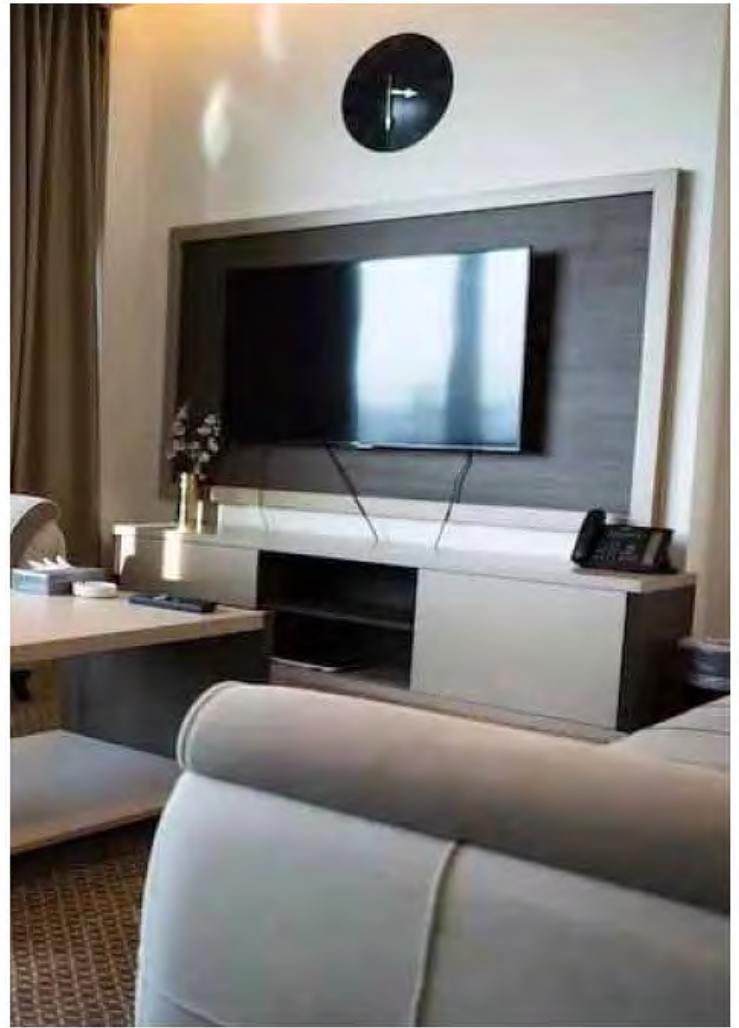
KUWAIT







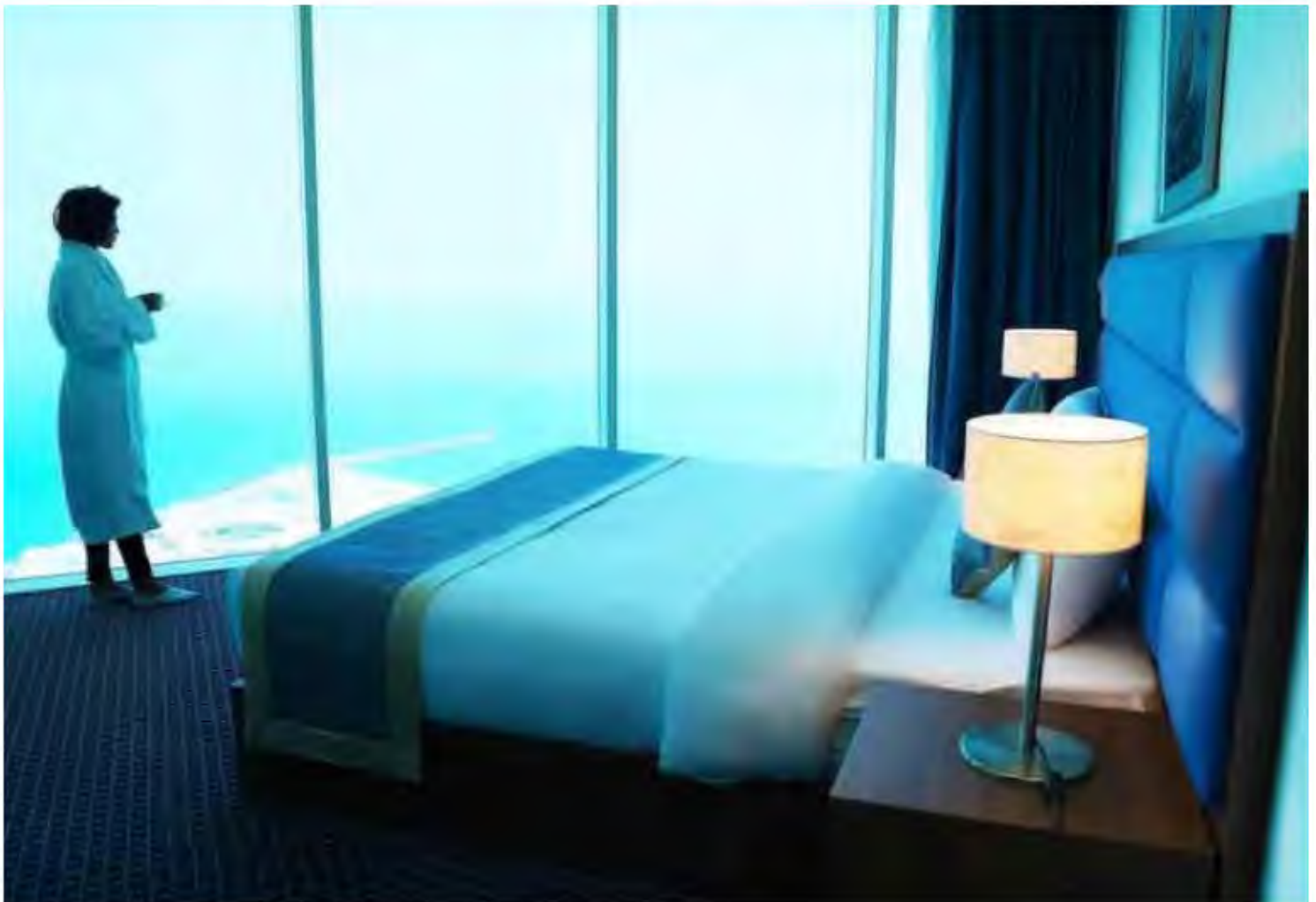














**BRAIRA
HOTEL**

RIYADH

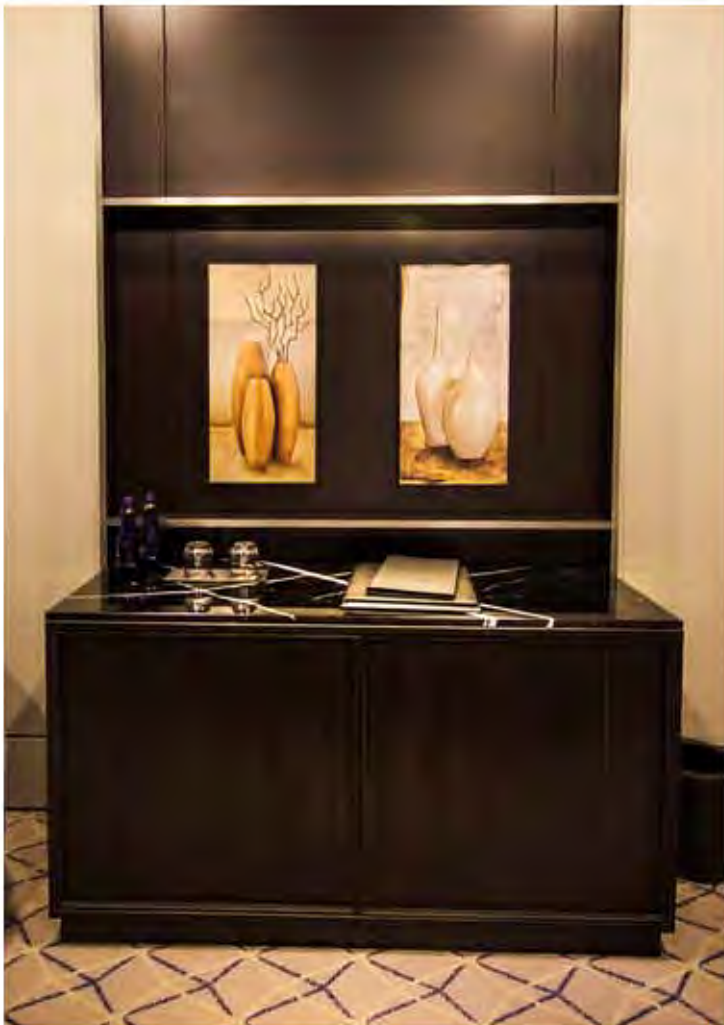


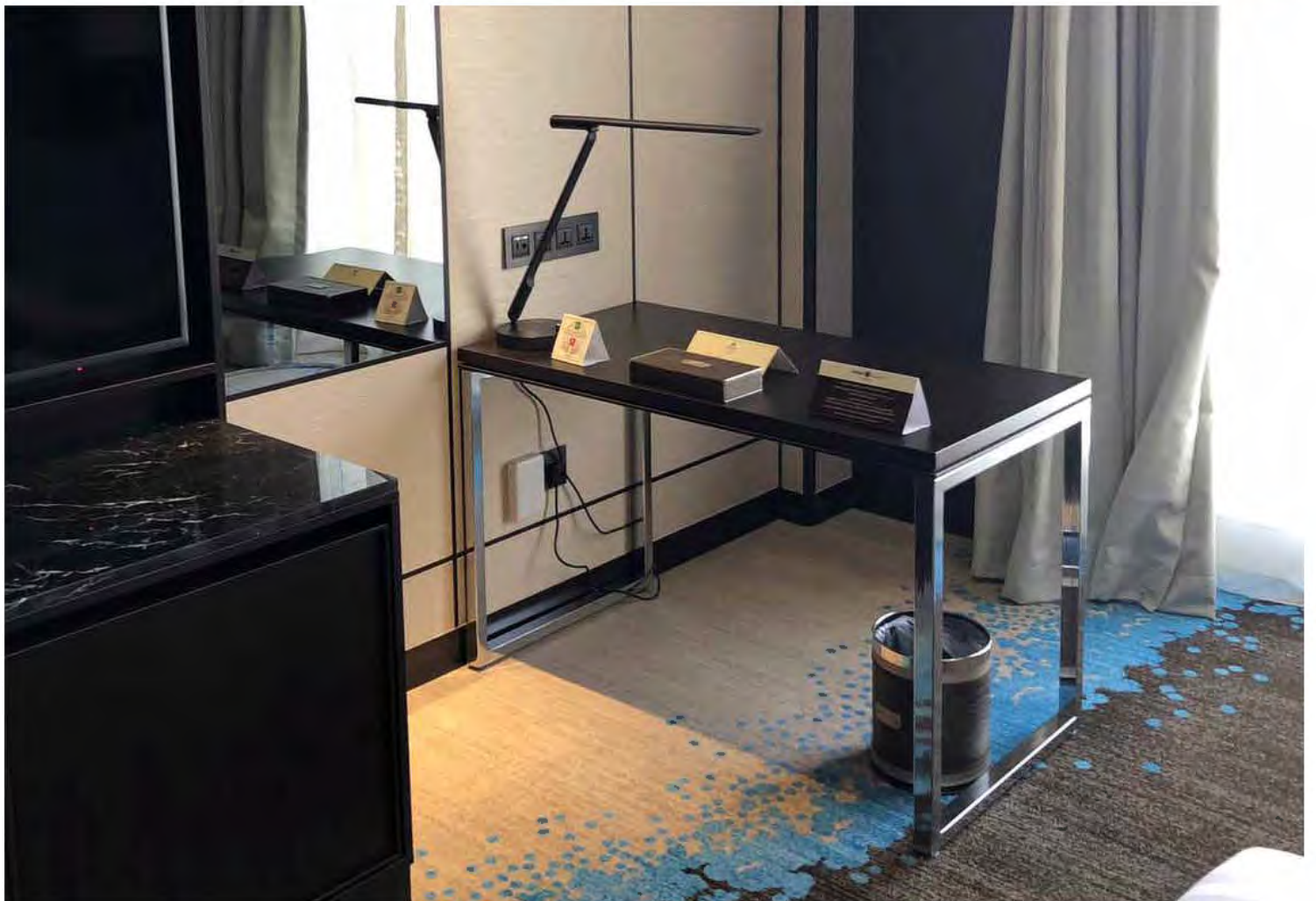


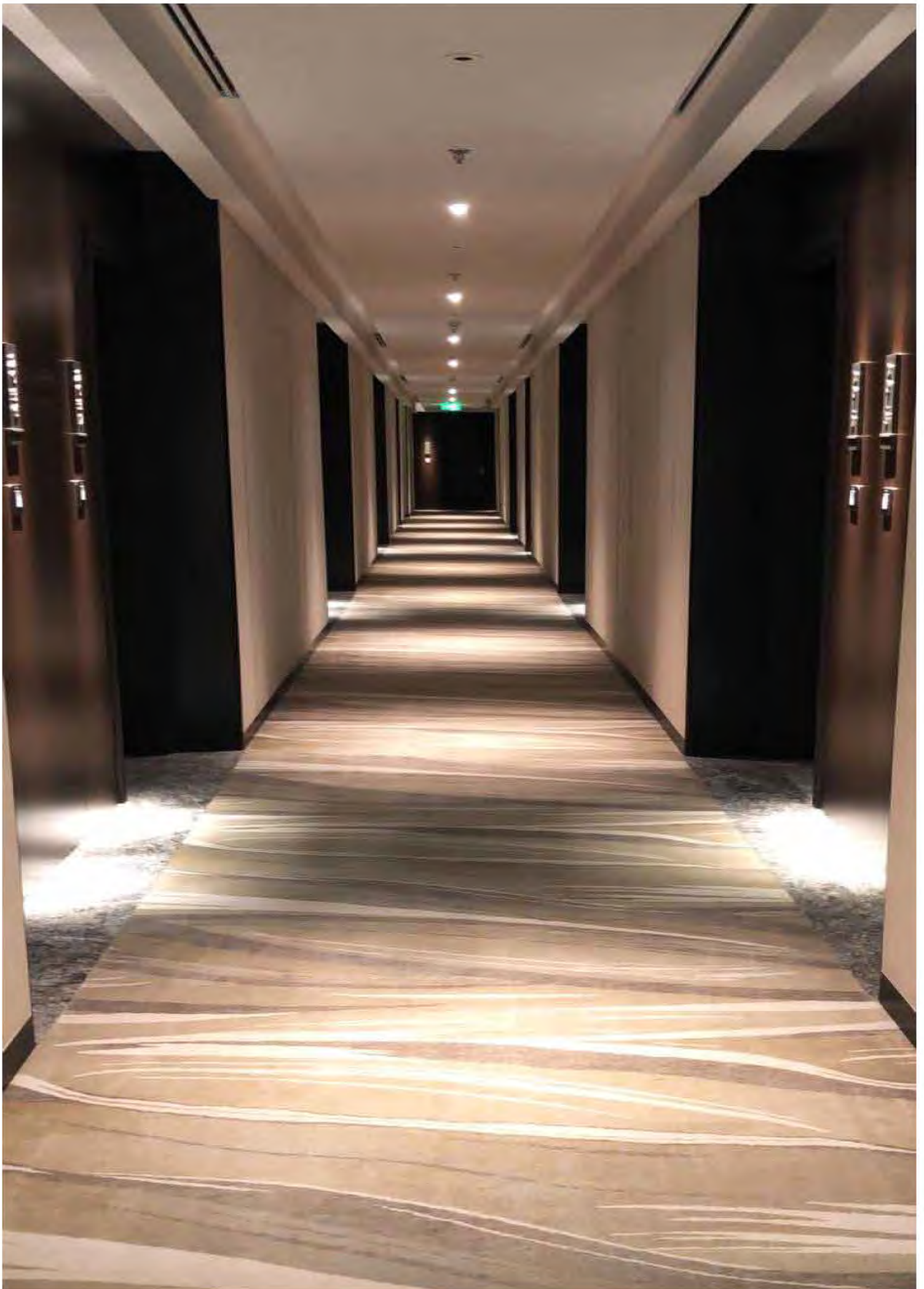














WD GROUP

**RAMADA
HOTEL**

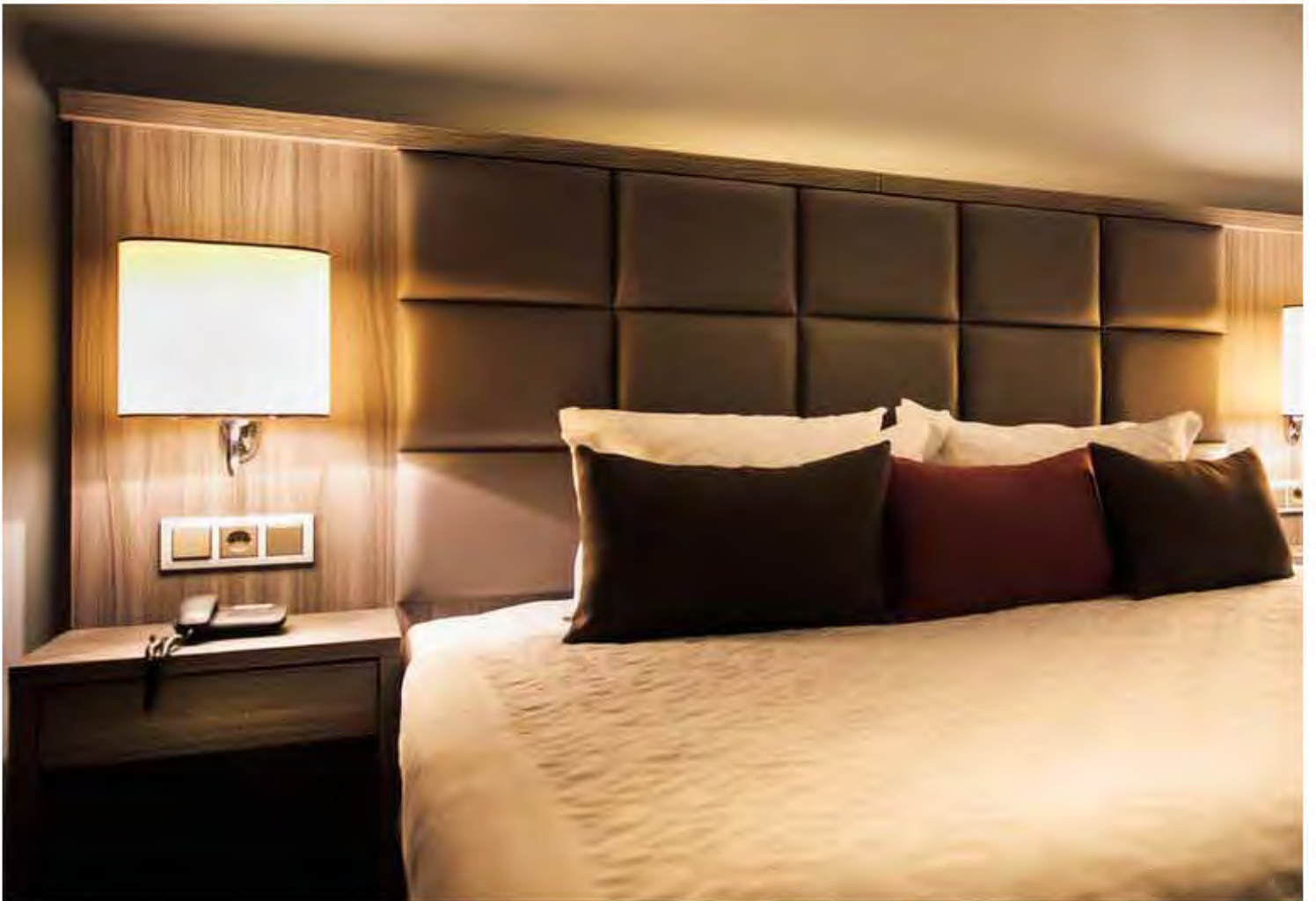
CIDDE

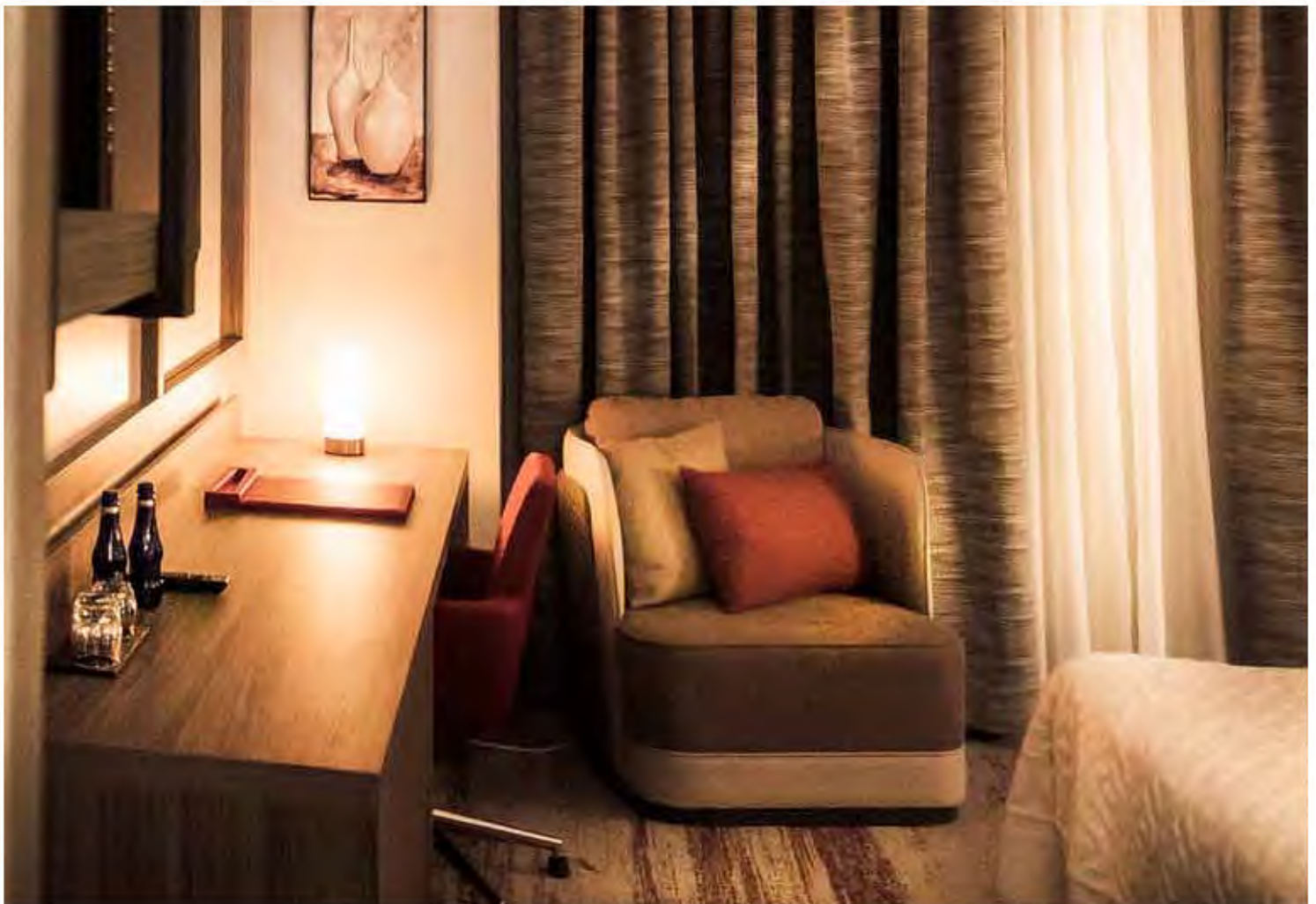














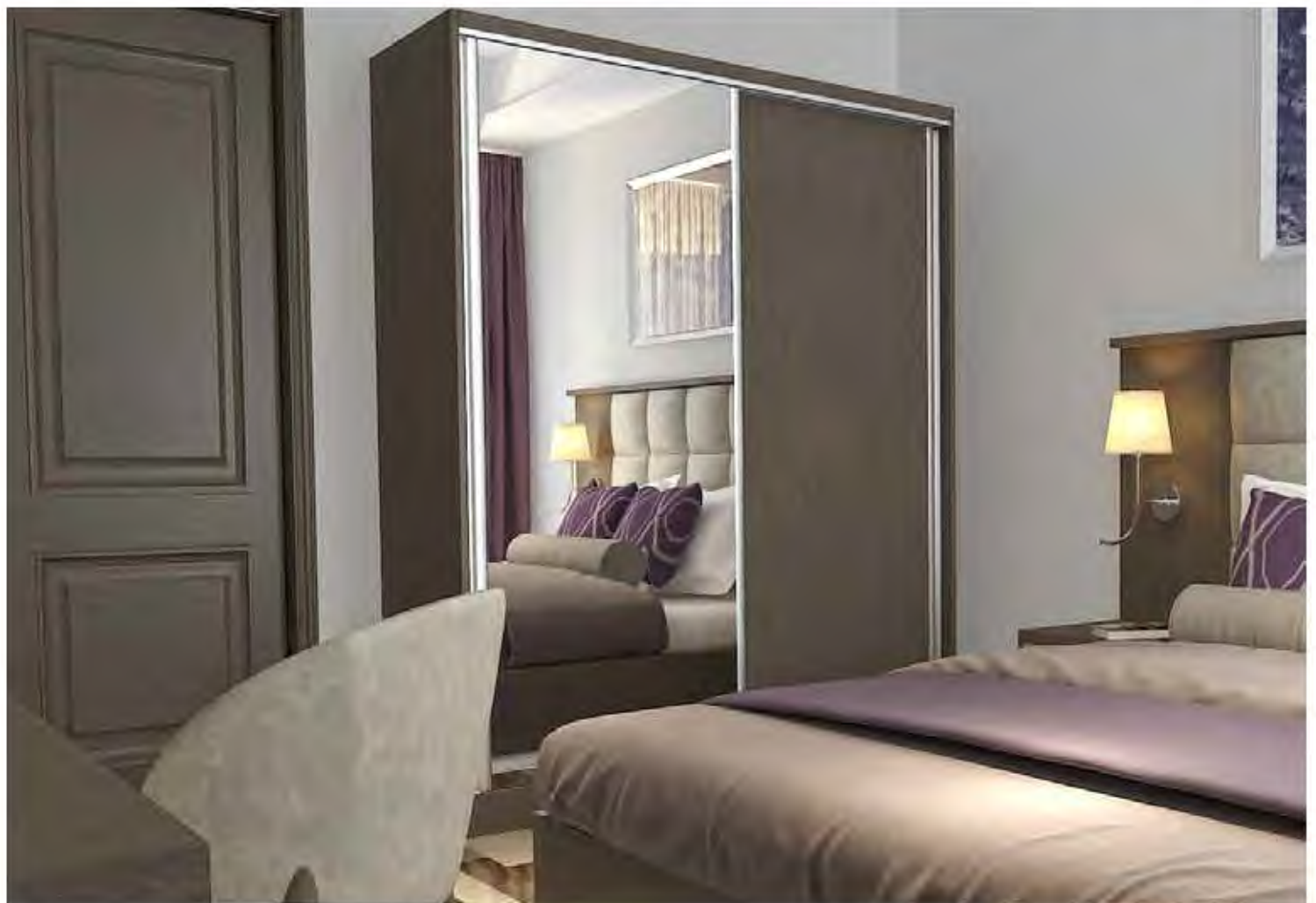
**SAINT REGIS
HOTEL**

DOHA





















 **Holiday Inn**

**HOLIDAY INN
HOTEL**

JEDDAH



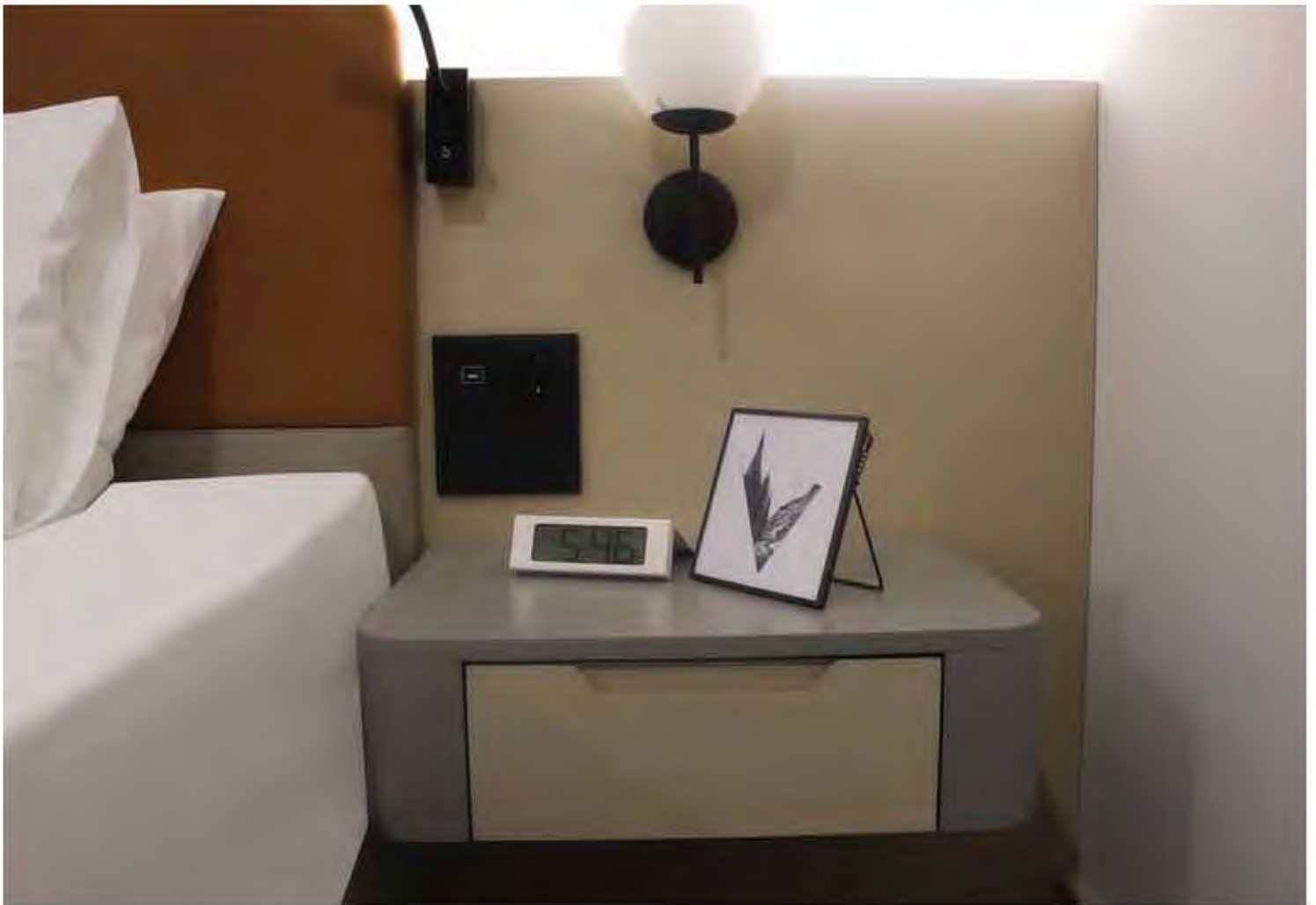
هولید این



Holiday Inn











**GOLDEN INN
HOTEL**

DAMMAM

Golden Garden













**A TOWER
HOTEL**

SLOVENYA



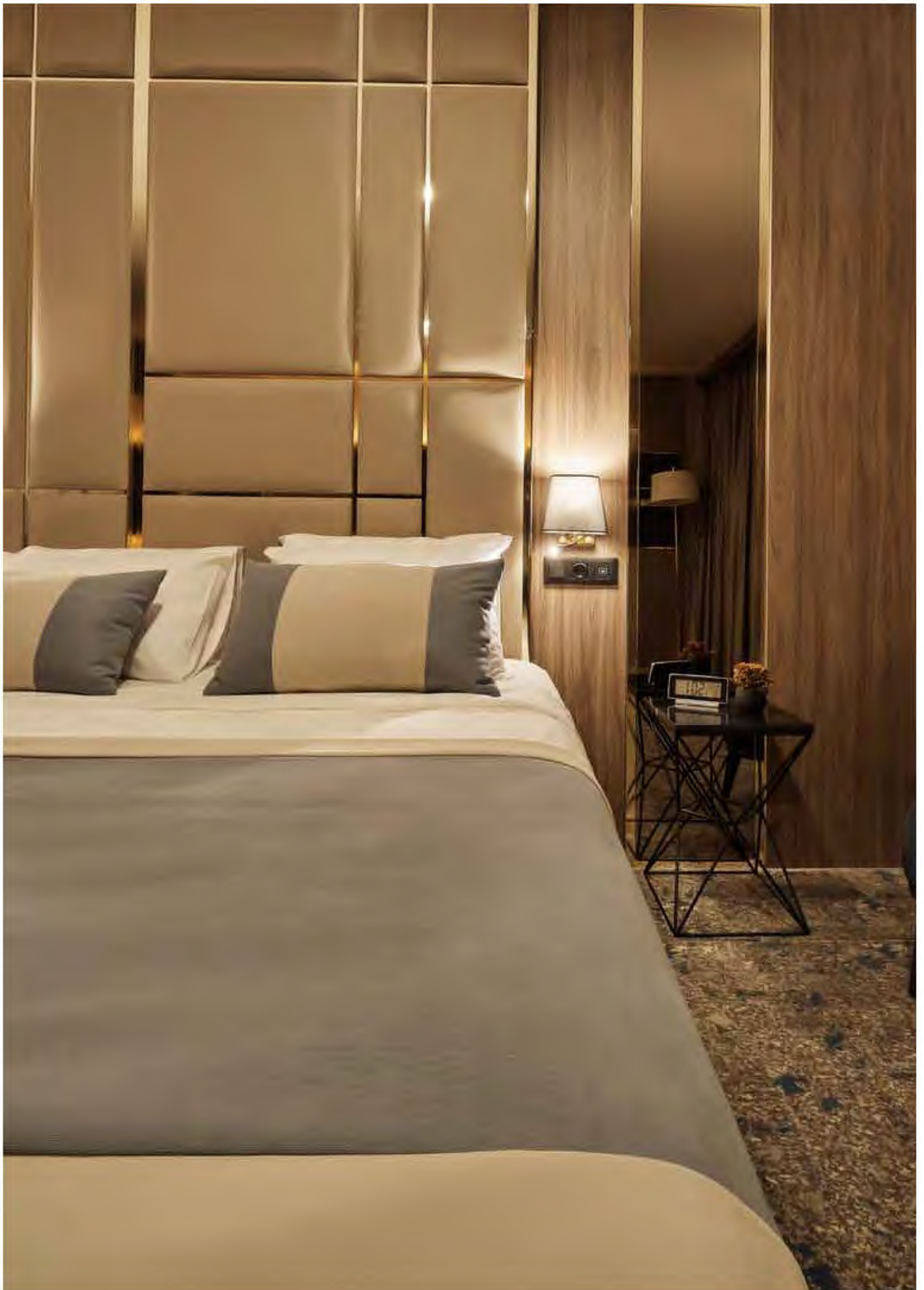










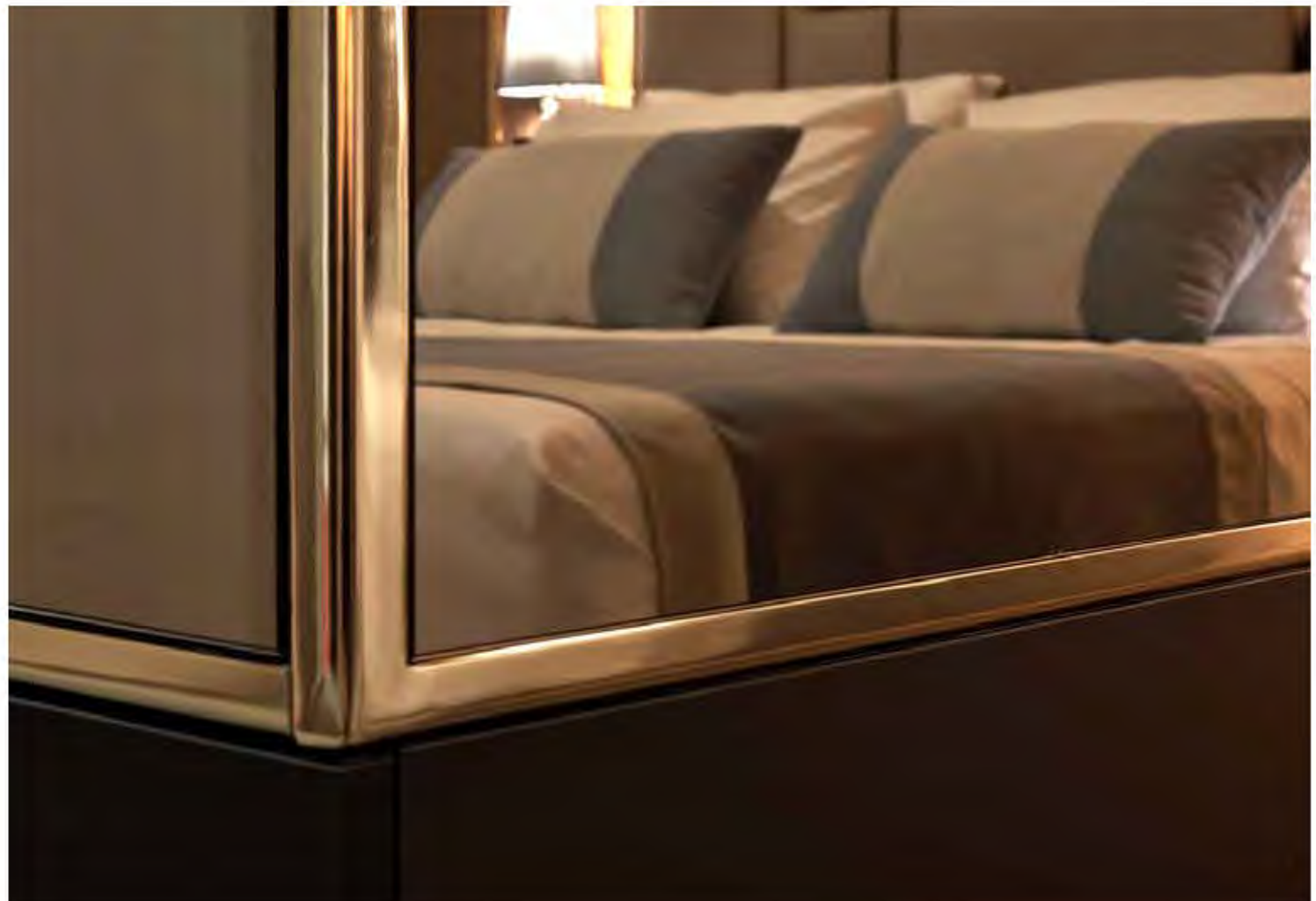












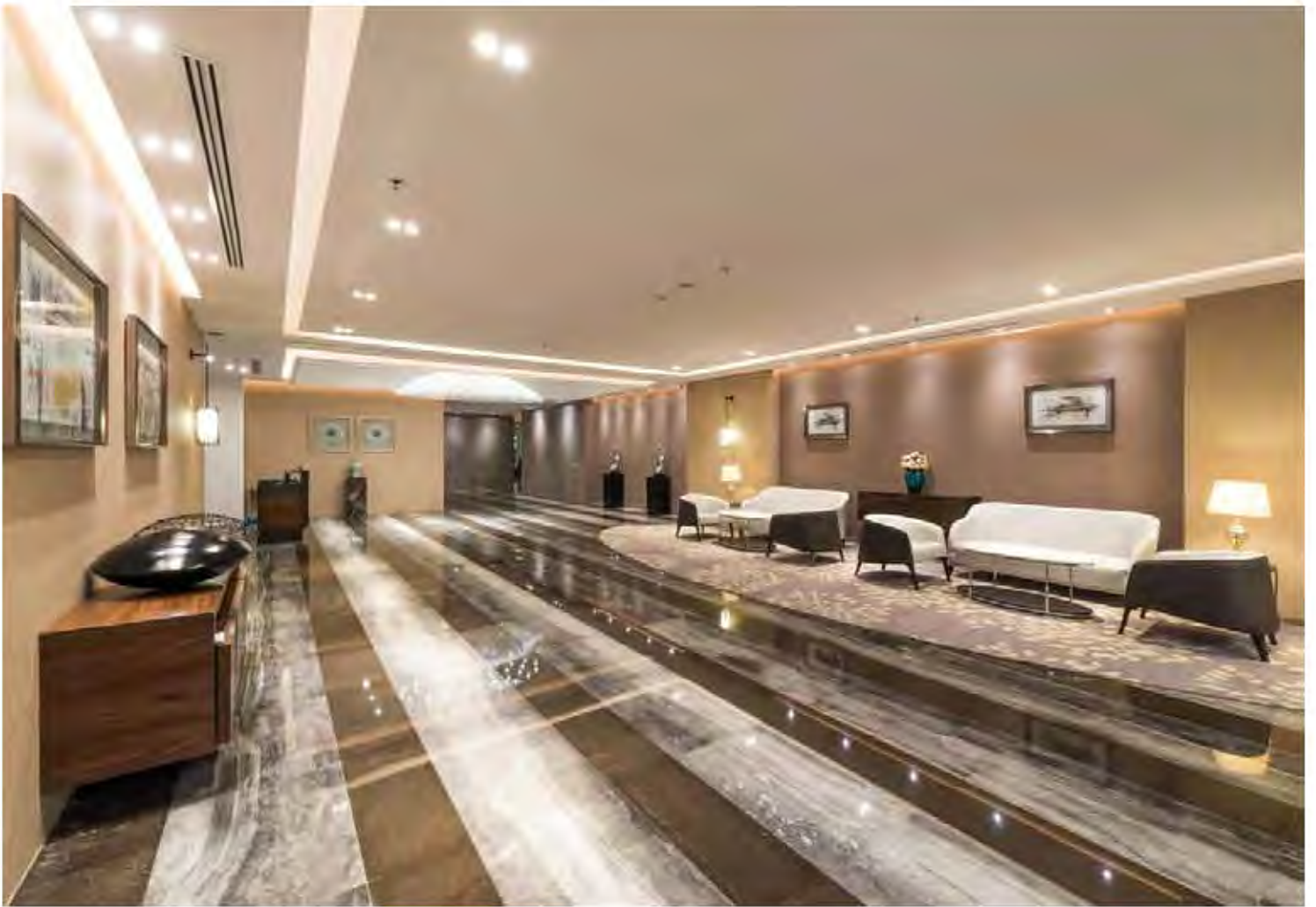




**ABEER MONISYA
HOTEL**

RIYADH













**CAPITAL
HOTEL**

MEKKA

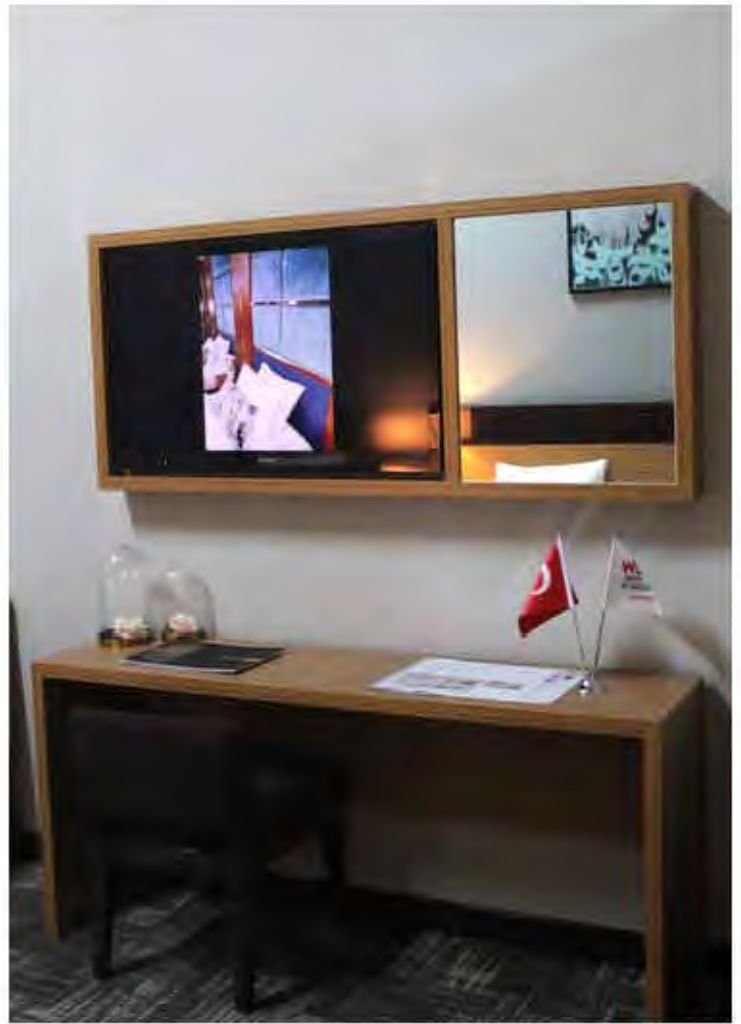
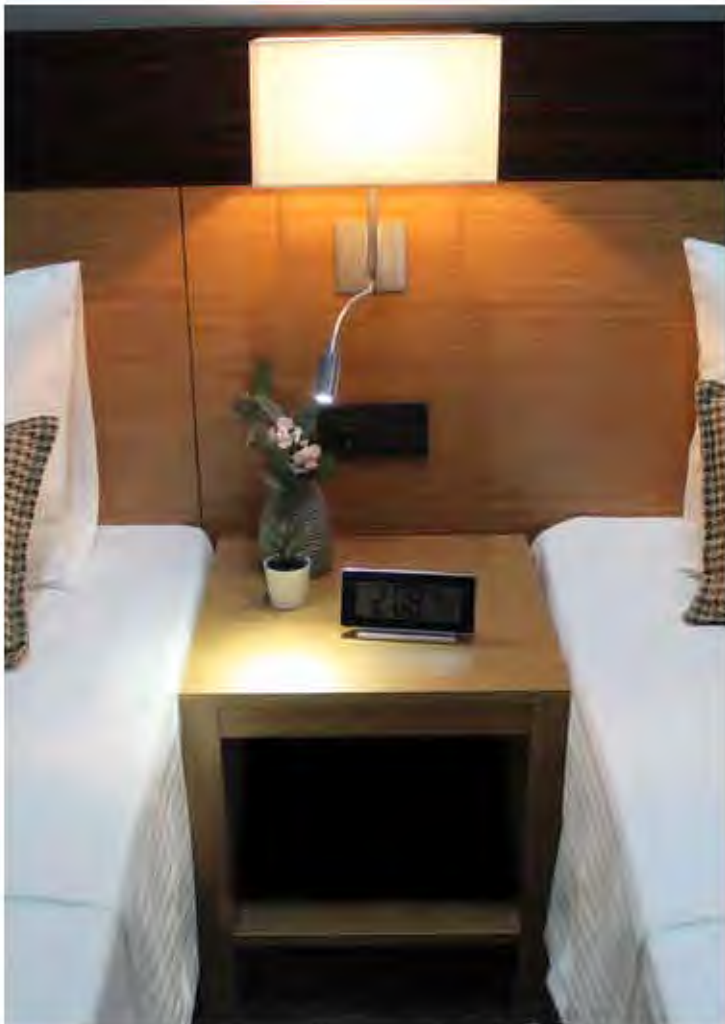
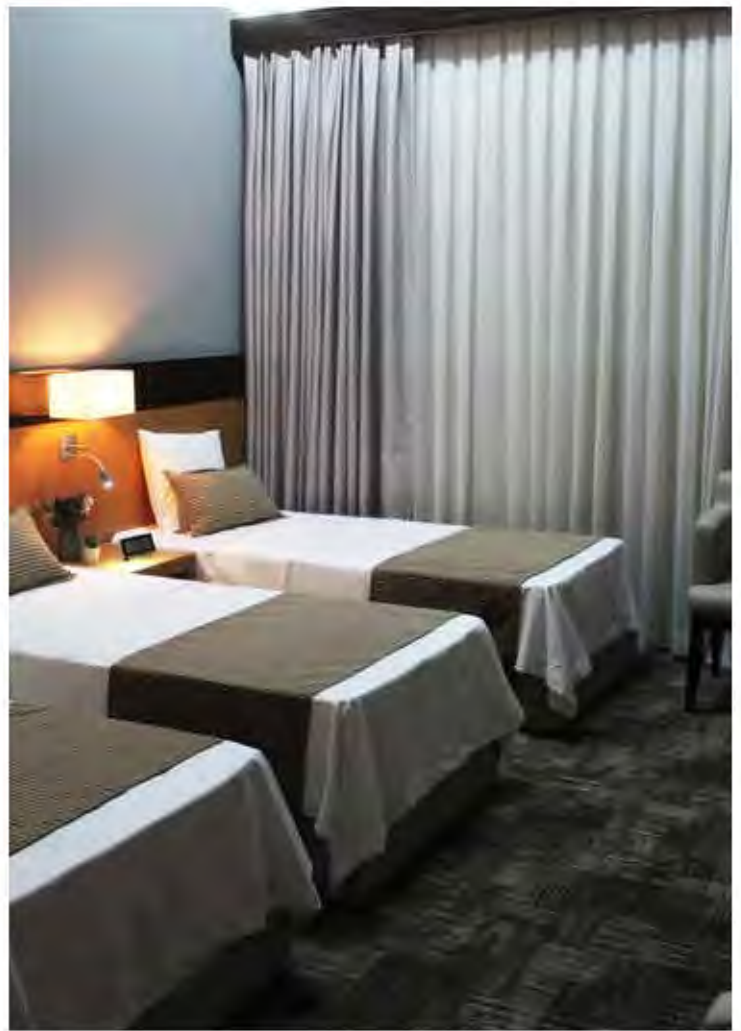
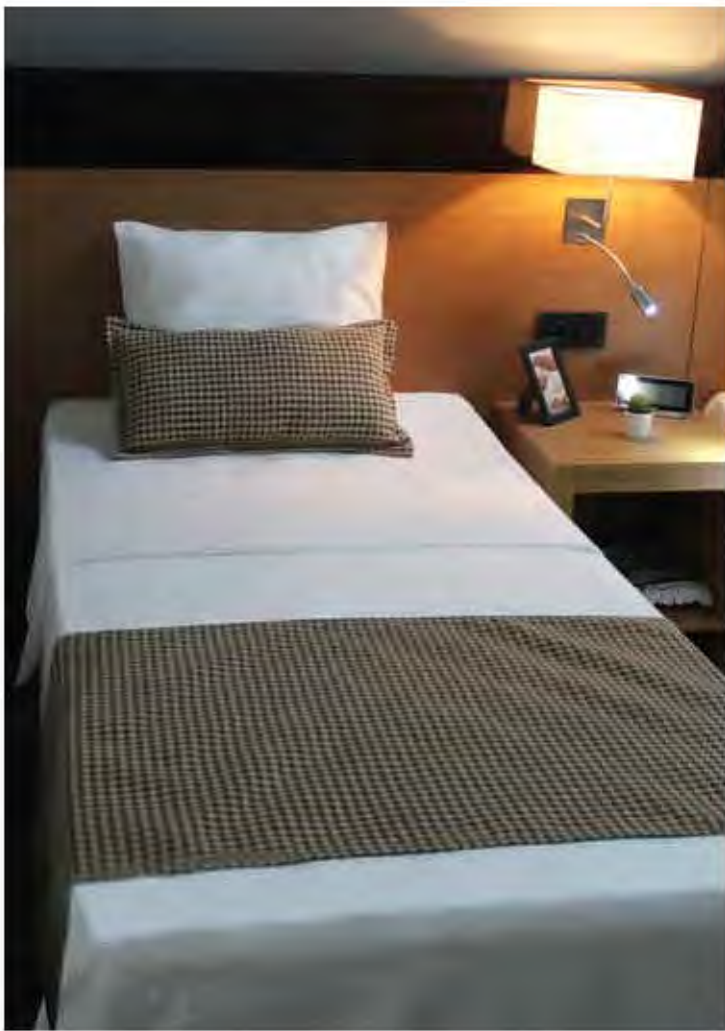


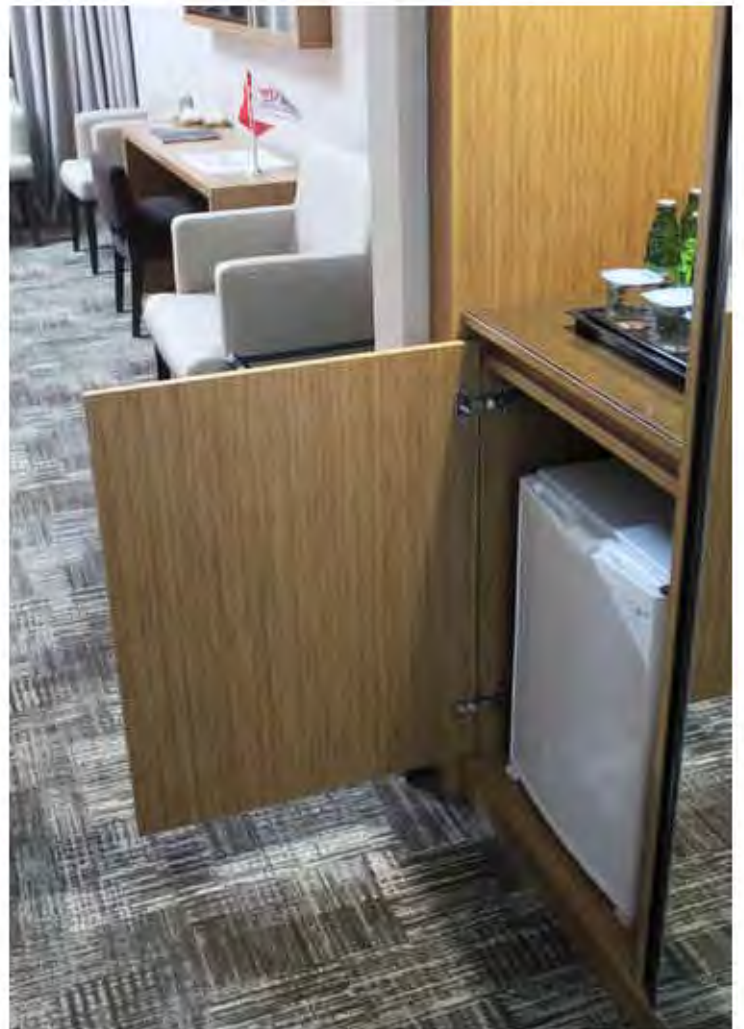


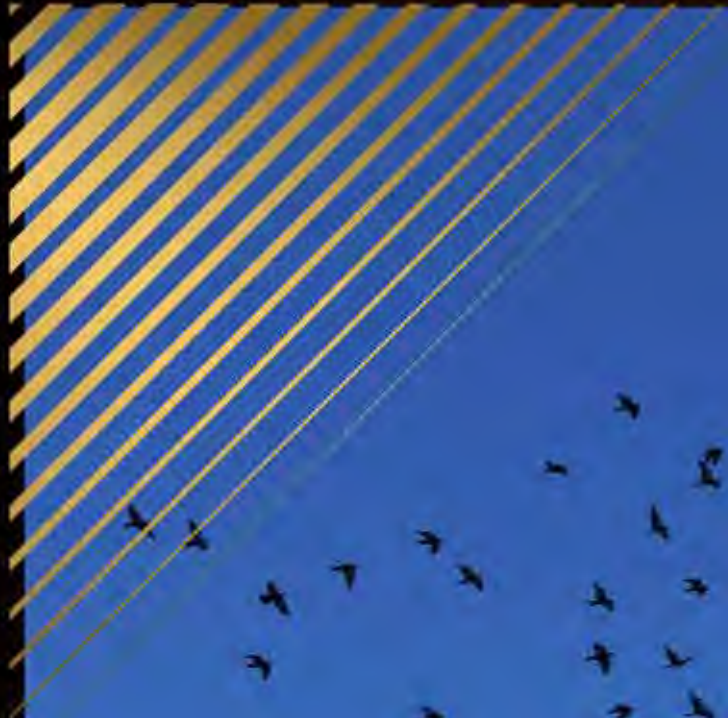










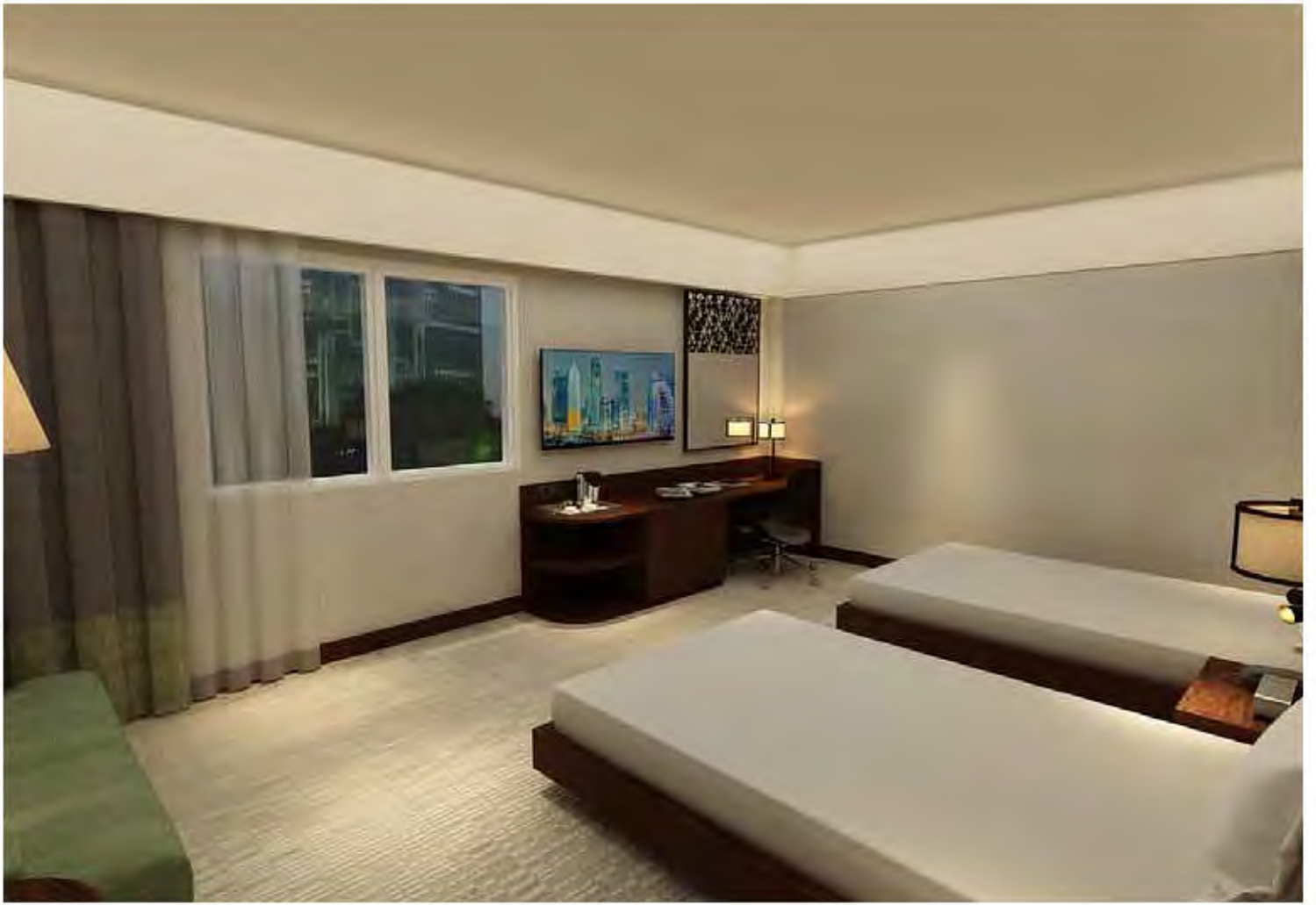














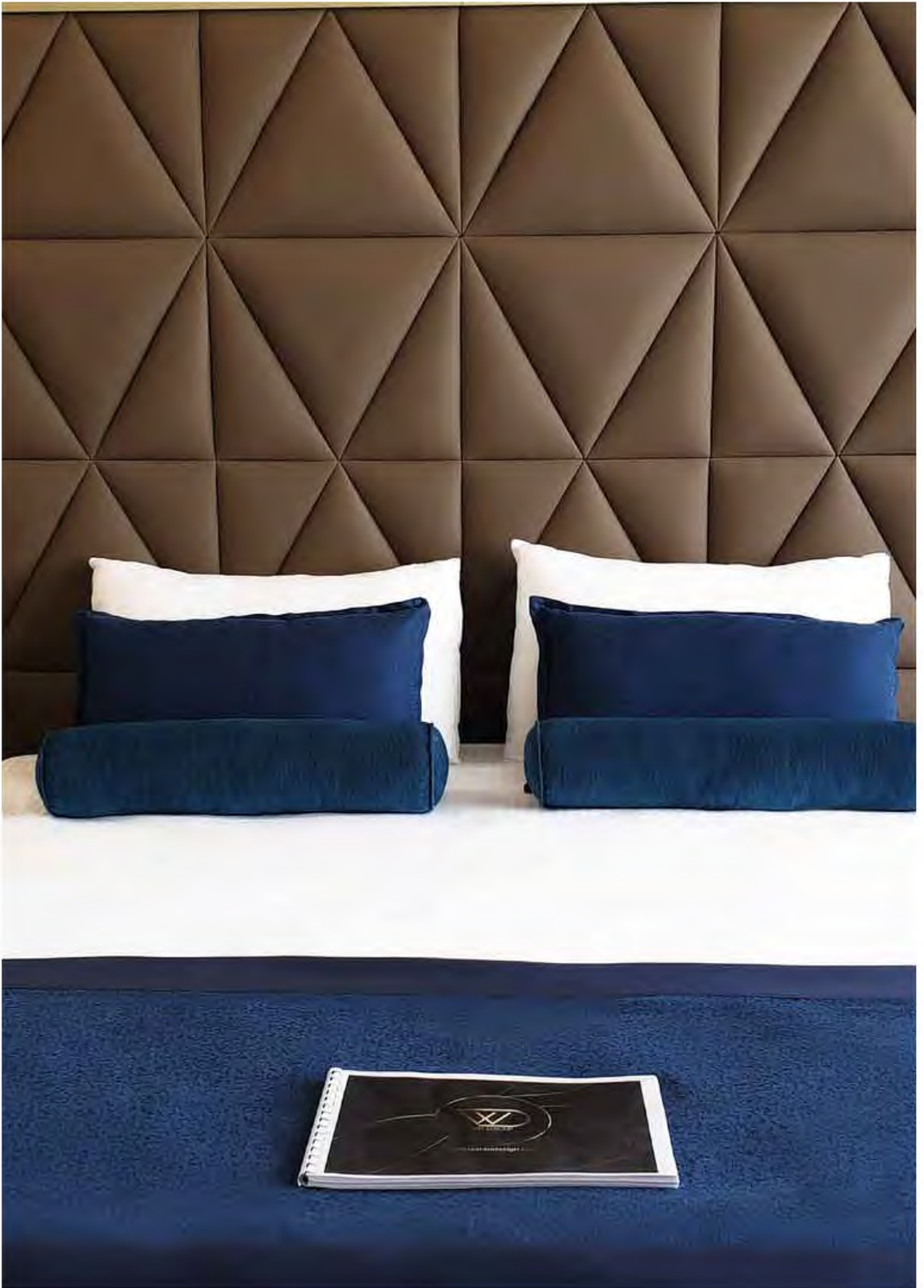
WD GROUP

**MANISA PRIME
HOTEL**

MANISA

























**MÖVENPICK
HOTEL**

İSTANBUL

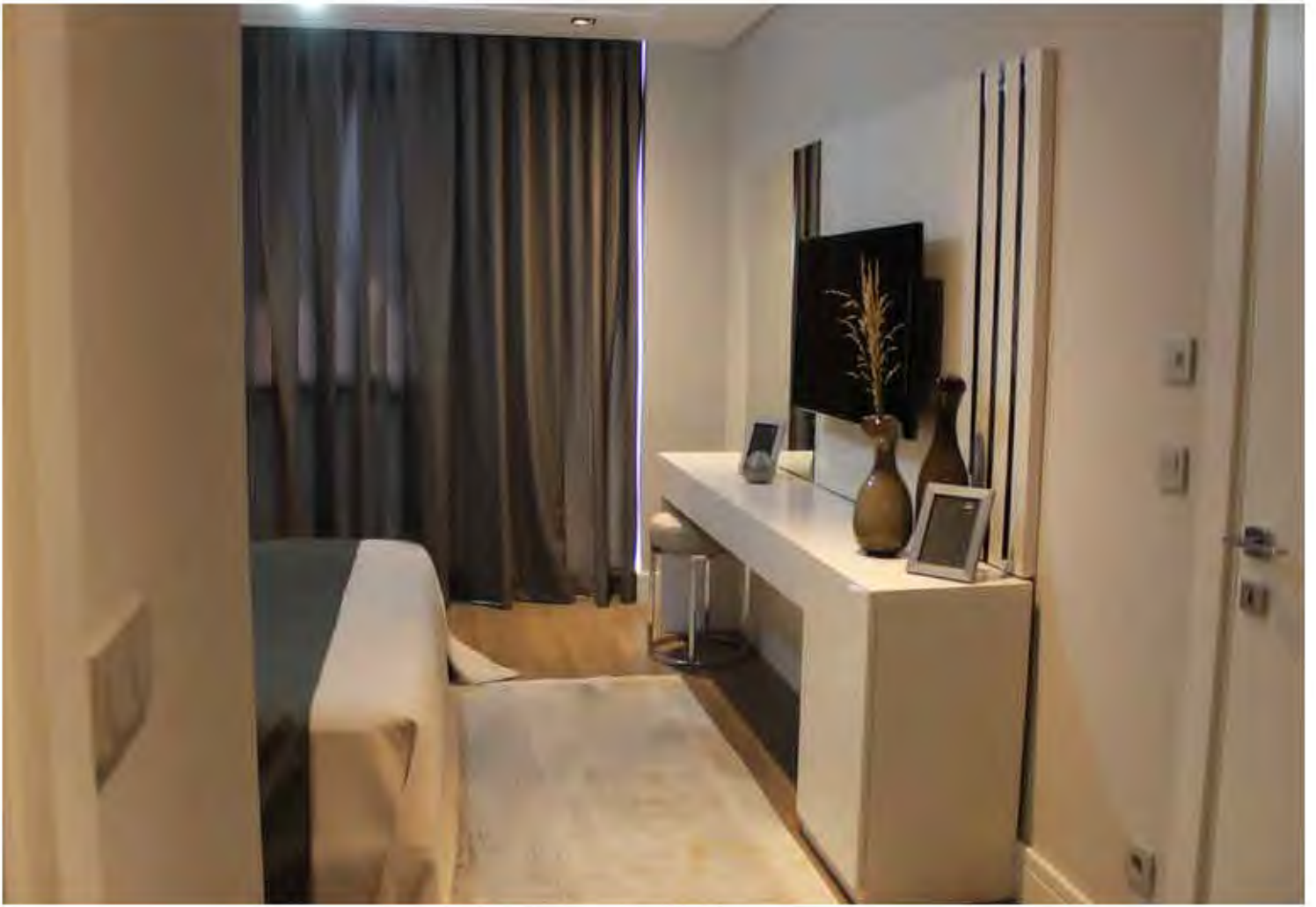






















**BEDER
HOTEL**

SOMALIA



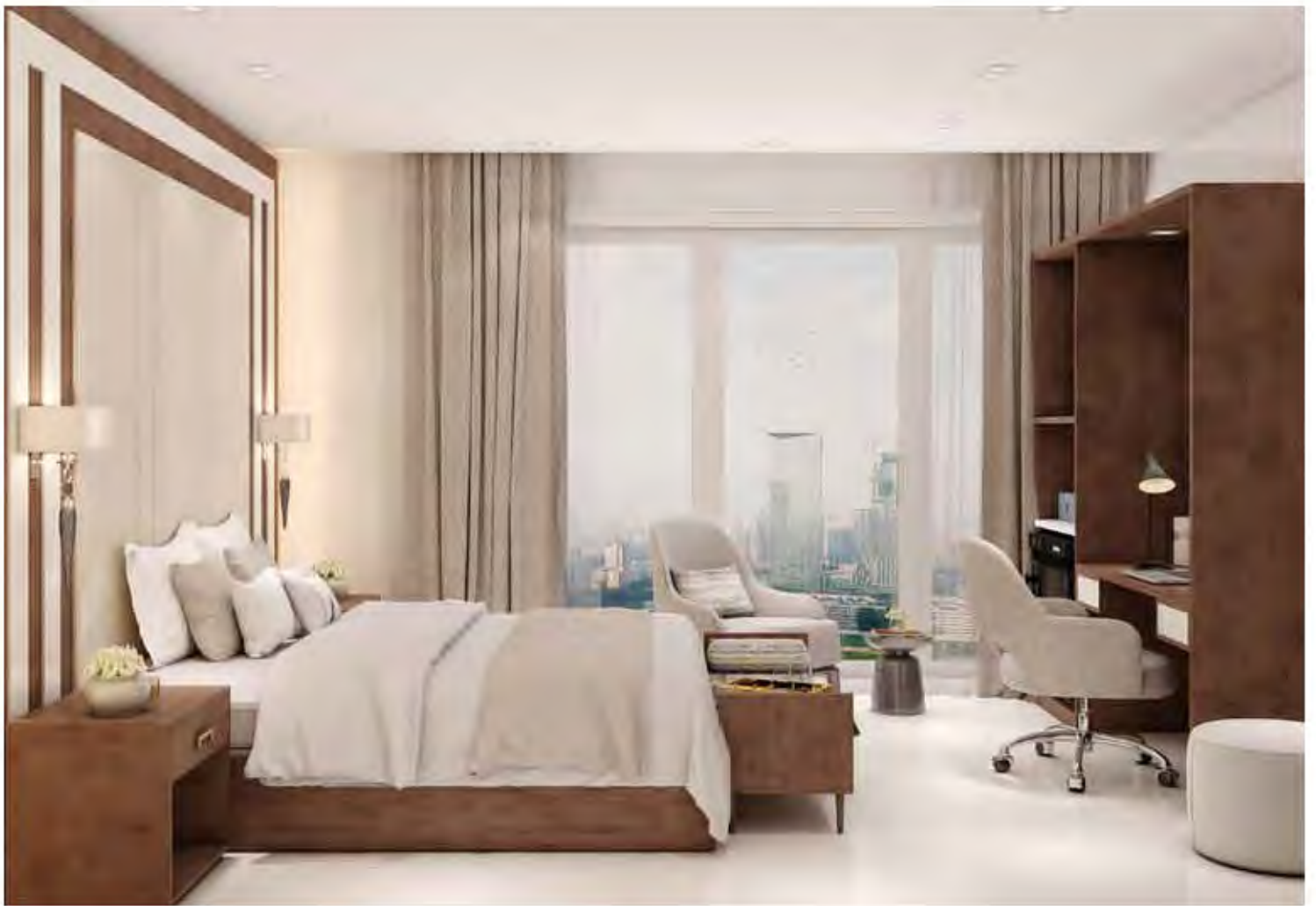


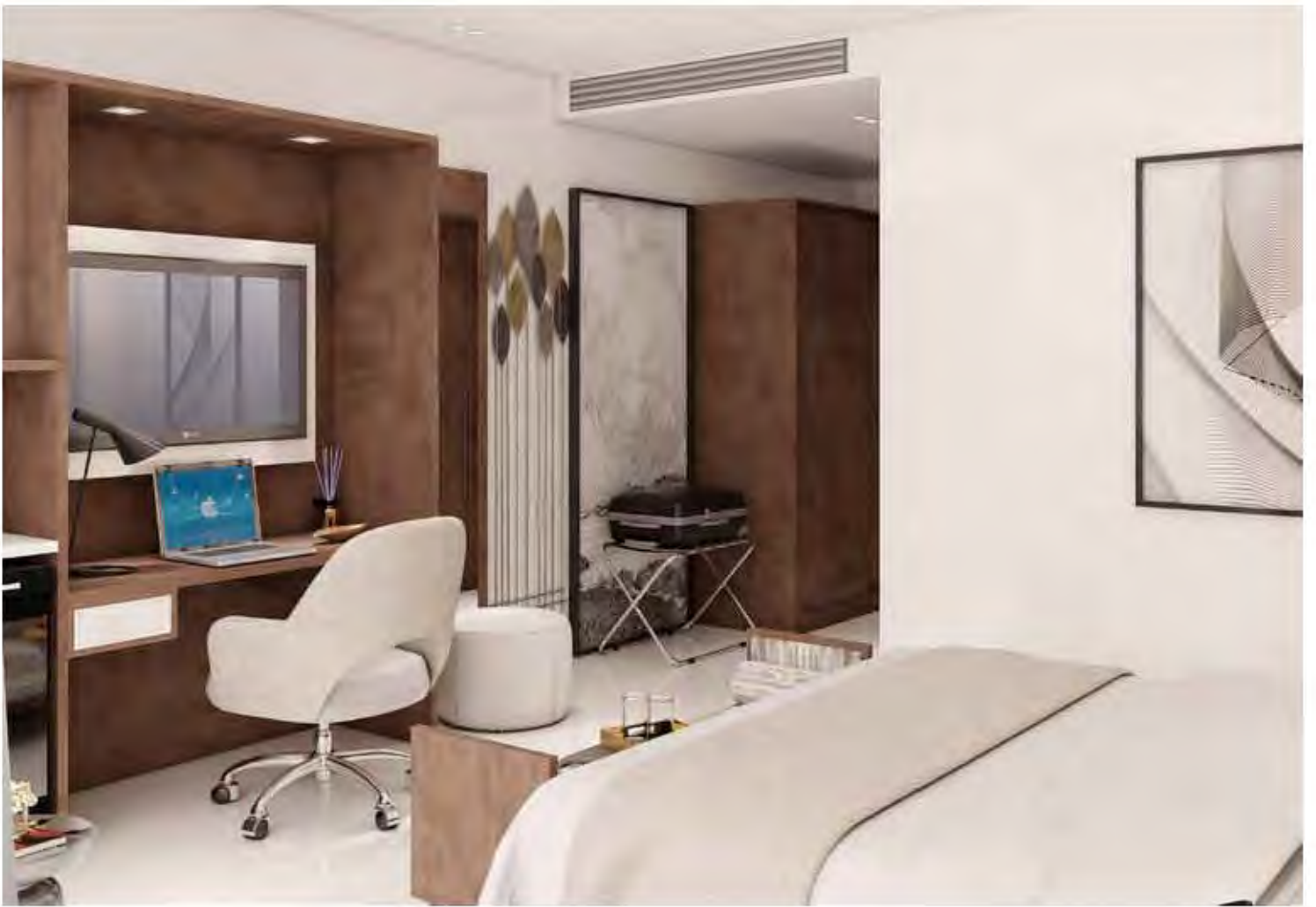




MONTY SUITES & GOLF
NIGERIA













VILLAS































































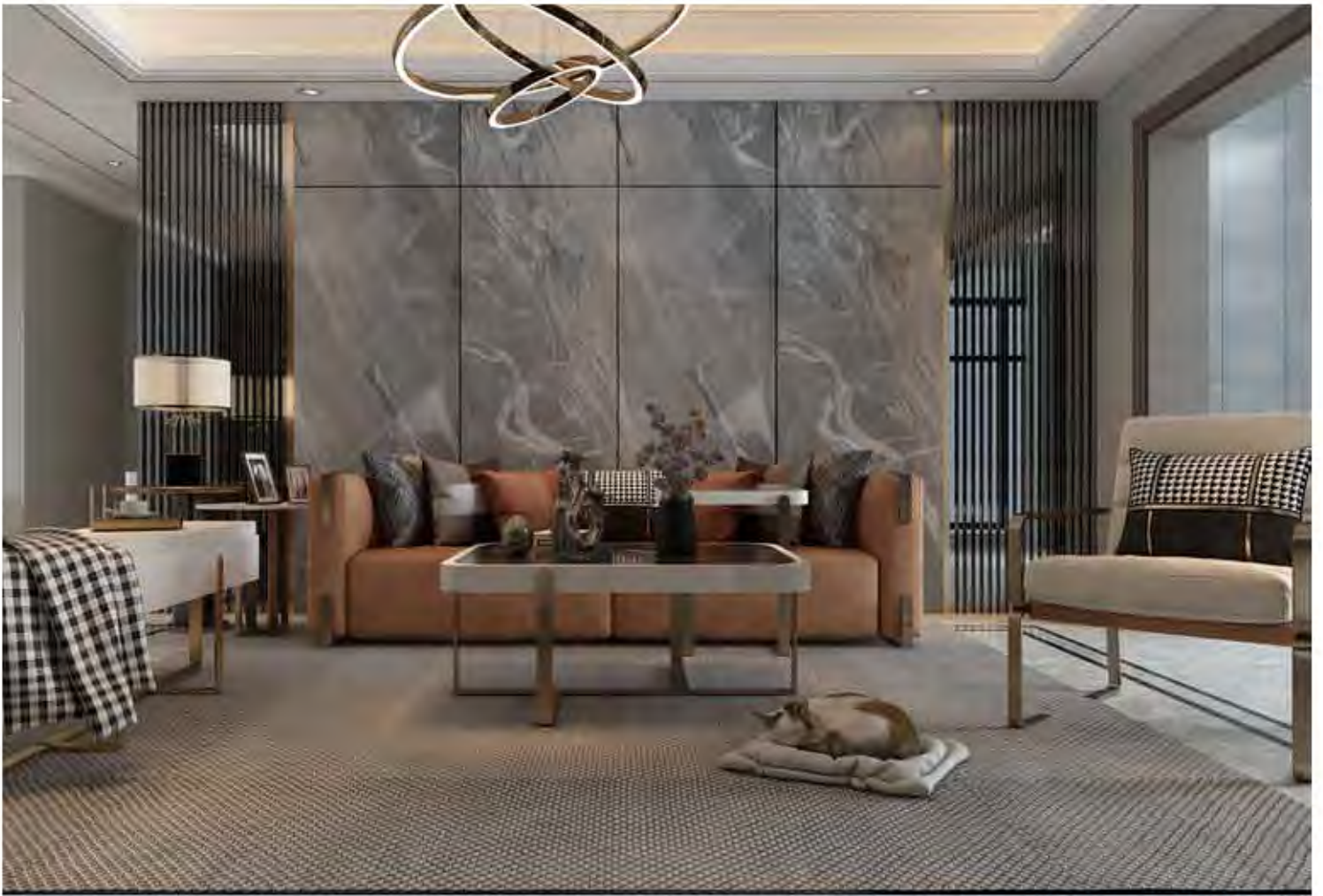




























Chair Group

Sandalye Grubu





WD-01-001



WD-01-002



WD-01-003



WD-01-004



WD-01-005



WD-01-006



WD-01-007



WD-01-008



WD-01-009



WD-01-010



WD-01-011



WD-01-012



WD-01-013



WD-01-014



WD-01-015



WD-01-016



WD-01-017



WD-01-018



WD-01-019



WD-01-020



WD-01-021



WD-01-022



WD-01-023



WD-01-024



WD-01-025



WD-01-026



WD-01-027



WD-01-028



WD-01-029



WD-01-030



WD-01-031



WD-01-032



WD-01-033



WD-01-034



WD-01-035



WD-01-036



WD-01-037



WD-01-038



WD-01-039



WD-01-040



WD-01-041



WD-01-042



WD-01-043



WD-01-044



WD-01-045



WD-01-046



WD-01-047



WD-01-048



WD-01-049



WD-01-050



WD-01-051



WD-01-052



WD-01-053



WD-01-054



WD-01-055



WD-01-056



WD-01-057



WD-01-058



WD-01-059



WD-01-060



WD-01-061



WD-01-062



WD-01-063



WD-01-064



WD-01-065



WD-01-066



WD-01-067



WD-01-068



WD-01-069



WD-01-070



WD-01-071



WD-01-072

Furniture Seat Group

Mobilya Koltuk Grubu





WD GROUP



WD-02-001



WD-02-002



WD-02-003



WD-02-004



WD-02-005



WD-02-006



WD-02-007



WD-02-008



WD-02-009



WD-02-010



WD-02-011



WD-02-012



WD-02-013



WD-02-014



WD-02-015



WD-02-016



WD-02-017



WD-02-018



WD-02-019



WD-02-020



WD-02-021



WD-02-022



WD-02-023



WD-02-024



WD-02-025



WD-02-026



WD-02-027



WD-02-028



WD-02-029



WD-02-030



WD-02-031



WD-02-032



WD-02-033





Coffee Table Group
Sehpa Grubu





WD-03-001



WD-03-002



WD-03-003



WD-03-004



WD-03-005



WD-03-006



WD-03-007



WD-03-008



WD-03-009



WD-03-010



WD-03-011



WD-03-012



WD-03-013



WD-03-014



WD-03-015



WD-03-016



WD-03-017



WD-03-018



WD-03-019



WD-03-020



WD-03-021



WD-03-022



WD-03-023



WD-03-024



WD-03-025



WD-03-026



WD-03-027



WD-03-028



WD-03-029



WD-03-030



WD-03-031



WD-03-032



WD-03-033



WD-03-034



WD-03-035



WD-03-036



WD-03-037



WD-03-038



WD-03-039



WD-03-040



WD-03-041



WD-03-042



WD-03-043



WD-03-044



WD-03-045



WD-03-046



WD-03-047



WD-03-048



Furniture Table Group
Mobilya Masa Grubu







WD-04-001



WD-04-002



WD-04-003



WD-04-004



WD-04-005



WD-04-006



WD-04-007



WD-04-008



WD-04-009



WD-04-010



WD-04-011



WD-04-012



Bergere Group
Berjer Grubu







WD-05-001



WD-05-002



WD-05-003



WD-05-004



WD-05-005



WD-05-006



WD-05-007



WD-05-008



WD-05-009



WD-05-010



WD-05-011



WD-05-012



WD-05-013



WD-05-014



WD-05-015



WD-05-016



WD-05-017



WD-05-018



WD-05-019



WD-05-020



WD-05-021



WD-05-022



WD-05-023



WD-05-024



WD-05-025



WD-05-026



WD-05-027



WD-05-028



WD-05-029



WD-05-030



WD-05-031



WD-05-032



WD-05-033



WD-05-034



WD-05-035



WD-05-036



WD-05-037



WD-05-038



WD-05-039



WD-05-040



WD-05-041



WD-05-042



WD-05-043



WD-05-044



WD-05-045



WD-05-046



WD-05-047



WD-05-048



049



WD-05-050



051



WD-05-052



WD-05-053



WD-05-054



WD-05-055



WD-05-056



WD-05-057



WD-05-058



WD-05-059



WD-05-060



WD-05-061



WD-05-062



WD-05-063



WD-05-064



WD-05-065



WD-05-066

WD-05-043

WD-05-044

WD-05-045

WD-05-046

WD-05-047

WD-05-048



TV units

TV Üniteleri







WD-06-001



WD-06-002



WD-06-003



WD-06-004



WD-06-005



WD-06-006



WD-06-007



WD-06-008



WD-06-009



WD-06-010



WD-06-011



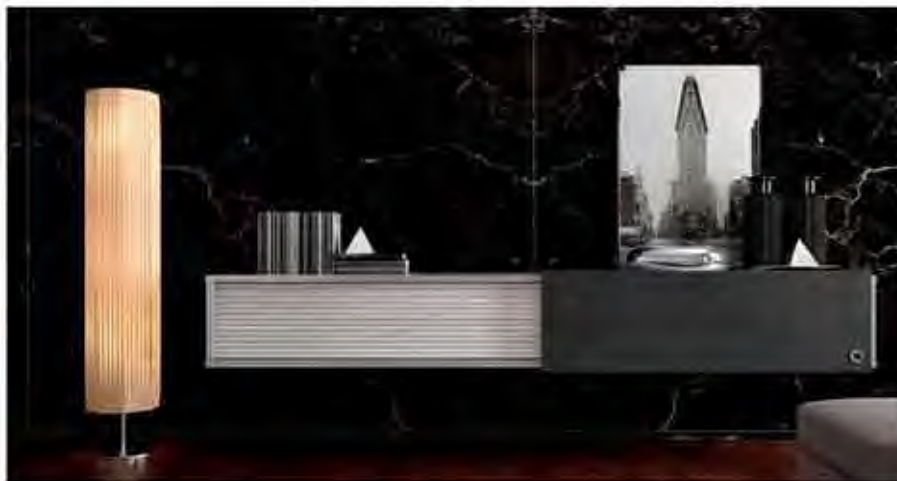
WD-06-012



WD-06-013



WD-06-014



WD-06-015



WD-06-016



WD-06-017



WD-06-018



WD-06-019



WD-06-020



WD-06-021



WD-06-022



www.watandesign.com



#watandesign

Yenidoğan OSB Yıldırım
Beyazıt Caddesi
No:13 Gürsu / BURSA

+90 444 16 32

info@watandesign.com



www.millenniumeg.com



#millennium

290 - N Teseen - Mohamed Naguib
AXIS - New Cairo
Tel.: +202 23270120
Mob.: +2010 2260 6062
E-mail: info@millenniumeg.com